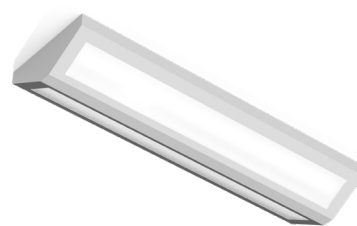


# 53V SERIES

PROJECT: \_\_\_\_\_  
 TYPE: \_\_\_\_\_  
 PRODUCT: \_\_\_\_\_  
 APPROVED BY: \_\_\_\_\_

## PRODUCT FEATURES

- Intended for Minimum to Supermax Confinement, Psychiatric Wards, Public Housing, Detention Centers, Transportation, Athletic Facilities, and more
- Available in 2ft and 4ft clamshell housing with contraband drop slot between ceiling and back of luminaire
- Inner and outer lens secured by "Z" bracket retention system with 6" stud spacing for maximum strength
- This product is Made in America and complies with the Buy American Act, and the Build America, Buy America Act



53V Series

## ORDERING INFORMATION

Example: 53V2-A-L240-1C-A/0-UN



53V				
<b>Series</b>	<b>Nominal Size</b> 2 = 2ft 4 = 4ft  *Nominal size. Dimensional Data on Page 2.	<b>Housing</b> A = 12Ga. CRS Painted B = 14Ga. CRS Painted C = 16Ga. CRS Painted D = 18Ga. CRS Painted E = 14Ga. SS Brushed F = 16Ga. SS Brushed G = 18Ga. SS Brushed H = 14Ga. SS Painted J = 16Ga. SS Painted K = 18Ga. SS Painted	<b>Lumen Output*</b> L2 = Medium L4 = High  *Subject to change. Performance Data on Page 3.	<b>Color Temp.</b> 35 = 3500K 40 = 4000K 50 = 5000K

<b>Circuits</b> 1C = 1 Circuit 2C = 2 Circuits	<b>Outer Lens</b> 0 = No Lens A = .125 Clear Poly. B = .156 Clear Poly. 1 = .187 Clear Poly. 2 = .250 Clear Poly. 3 = .375 Clear Poly. 4 = .500 Clear Poly. 5 = .187 Clear Temp. Glass 6 = .250 Clear Temp. Glass 7 = .375 Clear Temp. Glass* 8 = .500 Clear Temp. Glass* 9 = .750 Clear Temp. Glass*  *Must use with a 12Ga. or 14Ga. Frame.	<b>Inner Lens</b> A = .125 Prismatic Acrylic B = .125 Prismatic Poly. C = .156 Prismatic Poly. D = .187 Prismatic Poly. F = .156 Prismatic Acrylic G = .140 DR Acrylic* LC3 = .125 White Frosted Poly.  *Not rated for Wet Locations.	<b>Voltage</b> 12 = 120V 27 = 277V 34 = 347V UN = Universal (120V-277V)	<b>Accessory</b> FZ1 = Fuse (120V)* FZ2 = Fuse (277V)* LN = LED Night Light UV = .005 UV Absorbing Overlay AH = Allenhead Screws with center pin reject DM = 0-10V dimming with 10-100% range DM1 = 0-10V dimming with 1-100% range EL1 = Emerg. Bat. LED Low** EL2 = Emerg. Bat. LED High**  *Need 120V or 277V. Cannot use with UN voltage. **If stored, batteries should be fully recharged every six months and kept between 0°C-25°C to maintain optimal battery capacity.

## SPECIFICATIONS

**HOUSING:** Die-formed, seam welded, and ground smooth cold rolled steel or stainless steel clamshell design. Incorporates a removable reflector unitized with all electrical components for easy installation and maintenance. Clamshell design incorporates a contraband drop slot gap between the ceiling and back of fixture.

**BACKPLATE:** Die-formed with contraband drop slot and embossed mounting holes (material to match housing). Security caulking between ceiling and fixture is not required with this backplate design.

**HINGE:** 16-Gauge full length continuous, staked piano hinge with welded ends to prevent removal (material to match housing).

**LENS:** Outer and Inner lens options secured by "Z" retainers with weld studs spaced six inches apart for maximum strength.

**LED:** Available in three color temperatures 3500K, 4000K and 5000K. Other color temperatures available, consult factory. Standard 0-10V driver provided. Minimum 50,000 hours with 70% lumen maintenance in a 25°C ambient temperature environment, compliant with IES LM-80 testing standards.

**ELECTRICAL:** 120-277VAC or 347VAC, 50/60HZ electrical input high power factor electronic, constant current driver (<20% THD, >0.9 PF). Standard 0-10V driver provided. Optional dimming function with 10-100% range or 1-100% range.

**FASTENERS:** Tamper resistant Torx® head screws with center pin reject. Optional Allenhead screws available.

**FINISH:** White powder coat finish following multi-stage iron phosphate pretreatment.

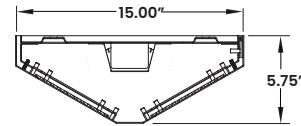
**GASKET:** Black neoprene gasket around door frame to prevent light leaks.

**MOUNTING:** Surface installation.

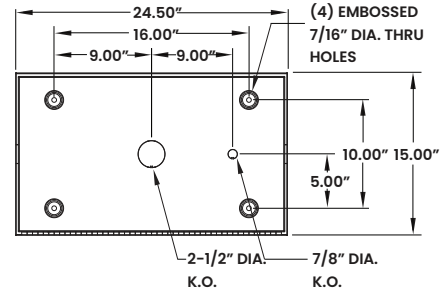
**WARRANTY:** New Star Promise.

**LABEL:** Fixture is certified to UL standards. Suitable for Wet Locations.

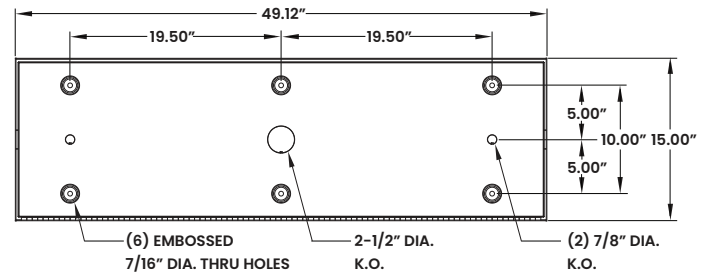
## DIMENSIONAL DATA



**53V2**



**53V4**



The 53V Series is covered by our New Star Promise.

Our promise means we will repair or replace any of our High Abuse or Vandal-Resistant architectural luminaires when installed according to our instructions for the life of the original installation if the fixture should fail due to physical abuse\*.

\*Damage caused by gunfire and chemical reactions is not covered by the New Star Promise.

## PERFORMANCE DATA

\*LEDs are frequently updated therefore values may change without notice.

MODEL	OUTPUT	COLOR TEMP.	LUMENS DELIVERED	EFFICACY (lm/w)	INPUT POWER (W)
53V2	Medium	3500K	2875	115	25
		4000K	3000	120	25
		5000K	3125	125	25
	High	3500K	5500	110	50
		4000K	5750	115	50
		5000K	6000	120	50
53V4	Medium	3500K	5750	115	50
		4000K	6000	120	50
		5000K	6250	125	50
	High	3500K	11000	110	100
		4000K	11500	115	100
		5000K	12000	120	100



**New Star Lighting**

2225 W Pershing Rd, Chicago, IL 60609  
(773) 847-1400  
www.newstarlighting.com

Specifications and dimensions are subject to change without notice. For additional options and dimensional details, please consult your New Star Lighting representative.

© 2025, New Star Lighting. All rights reserved. Unauthorized duplication or distribution is prohibited.