

COMPLETECARE SURGICAL DOWNLIGHT SERIES

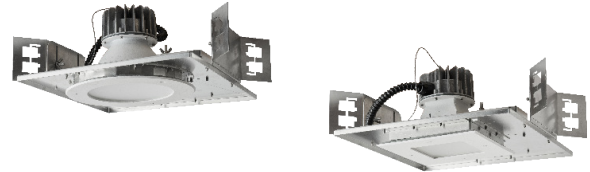
***PRELIMINARY CUTSHEET**



PROJECT: _____
 TYPE: _____
 PRODUCT: _____
 APPROVED BY: _____

PRODUCT FEATURES

- Intended for surgical suite and hybrid surgical suite applications
- 4" and 6" sealed recessed downlight, round or square aperture options
- Suitable for non-IC and wet location installations, IP65 rated per IEC60598 and NSF2 Splash/Non-Food Zone listed. Independently tested and certified to meet the MIL Spec 461G Fixed Navy/Air Force for Radiated and Conducted emissions
- Variety of wattages and lumen packages, up to 6000 lumens in 6" aperture
- This product is Made in America and complies with Buy American Act, and the Build America, Buy America Act



CCDLS

ORDERING INFORMATION

Example: CCDLS-4-R-1000LM-30-90C-F-WH-NIC-DM1-UN



CCDLS					90C	
Series	Aperture 4 = 4 inch 6 = 6 inch	Shape R = Round S = Square	Lumen Output* 1000LM = 1000 lumens 1500LM = 1500 lumens 2000LM = 2000 lumens 2500LM = 2500 lumens 3000LM = 3000 lumens 6000LM = 6000 lumens** Green = 530nm** *Subject to change. Performance Data on Page 3. **6" Round only.	Color Temp. 30 = 3000K 35 = 3500K 40 = 4000K TW1 = Tunable White 2700K to 5000K TW2 = Tunable White 2700K to 6500K	CRI 90C = 90 CRI	Trim F = Flange T = Trimless

Trim Finish WH = White antimicrobial D = Diffuse CD = Clear Diffuse SP = Specular	Frame-In Kit NIC = Non-IC Housing IC = IC Housing CP = Chicago Plenum Housing	Driver Type DM1 = 0-10V Dimming to 1% DMT = 0-10V & TRIAC/ELV Tunable White Driver*: DALI8 = 1-Channel TWO = 2-Channel 0-10V *Tunable White Driver requires choice of TW1 or TW2 in Color Temp. Column.	Voltage 12 = 120V 27 = 277V 34 = 347V UN = Universal (120V-277V)	Options EM = Emergency Backup (Remote)* WB = Wing Bracket *Consult factory for CA Title 24 options. If stored, batteries should be fully recharged every six months and kept between 0°C-25°C to maintain optimal battery capacity.



New Star Lighting

2225 W Pershing Rd, Chicago, IL 60609
 (773) 847-1400
www.newstarlighting.com

Specifications and dimensions are subject to change without notice. For additional options and dimensional details, please consult your New Star Lighting representative.

© 2025, New Star Lighting. All rights reserved. Unauthorized duplication or distribution is prohibited.

SPECIFICATIONS

CONSTRUCTION: Die-cast aluminum heat sink design for maximum thermal dissipation.

FRAME-IN KIT: 20-Gauge die-formed, galvanized steel. Vertically adjustable collar accommodates ceiling thicknesses up to 1.25", adjustable post-installation. Telescopic hanger bars come as standard can be installed in either direction (wing bracket can be ordered as option) for installation with wood and steel frame joists and T-grid ceiling systems spaced up to 24" on center. Quick-access junction box accessible post-installation from above and below ceiling. Includes (7) 1/2" knock-outs to allow straight conduit runs.

TRIM: IP-rated trim/Light engine incorporates the heat sink, LED module, optics and lower trim. Configurable with an IP64-rated Flush lens trim that is secured to the Frame-In kit with hidden torsion springs or an IP65 Flush lens trim secured with three (Round) or four (Square) tamper-resistant (Torx®) captive fasteners. Closed-cell gasketing at ceiling flange. See Trim Ordering Information for available options.

LENS: Diffuse acrylic upper lens. 1/8" clear impact-resistant acrylic or polycarbonate flush lens at ceiling trim. Continuous seal between lens and trim ring. Available with various finishes.

LED: LED modules are available in 3000k, 3500k, and 4000k with maximum 3-step MacAdam variation allowance. Minimum 90CRI standard. Minimum 50,000 hours with 70% lumen maintenance in a 25°C ambient temperature, compliant with IES LM-80 testing standards.

DRIVER: 0-10V dimming with 1-100% range, ELV.

OPTIONAL TUNABLE WHITE DRIVERS:

DALI8 - DALI Type 8 (One DALI Address)

TWO - Two Channel 0-10V dimming; one channel for brightness, one channel for CCT

FASTENERS: Stainless steel Philips flat head screws with captive cage nuts. Finish to match trim.

FINISH: Flat White, Diffuse, and Specular.

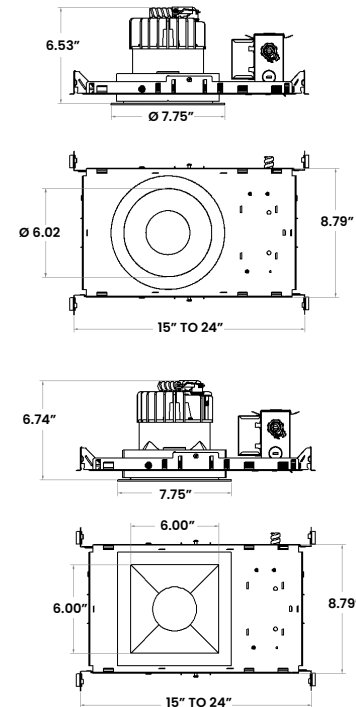
INSTALLATION: Recessed drywall installation and Grid.

WARRANTY: Five (5) year warranty period.

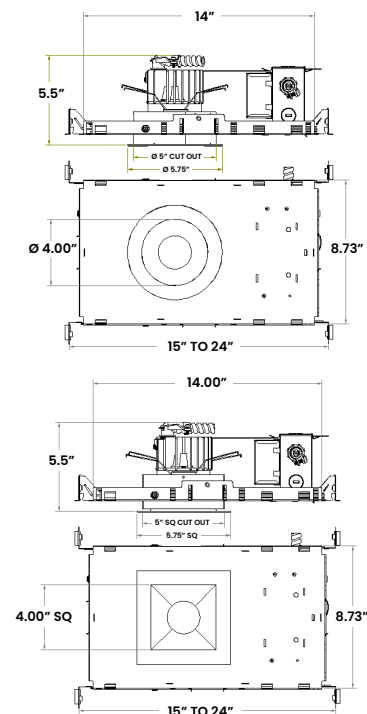
LABEL: Fixture is certified to UL standards by Intertek Testing Laboratory for non-IC and wet location installations. IP65 Rating per IEC60598. Certified for NSF2 Splash Zone/ Non-Food Zones. Independently tested and certified to meet the MIL Spec 461G Fixed Navy/Air Force for Radiated and Conducted emissions. This product is Made in America and complies with Buy American Act, and the Build America, Buy America Act.

DIMENSIONAL DATA

CCDL - 6" ROUND AND SQUARE



CCDL - 4" ROUND AND SQUARE



New Star Lighting

2225 W Pershing Rd, Chicago, IL 60609
(773) 847-1400
www.newstarlighting.com

Specifications and dimensions are subject to change without notice. For additional options and dimensional details, please consult your New Star Lighting representative.

© 2025, New Star Lighting. All rights reserved. Unauthorized duplication or distribution is prohibited.