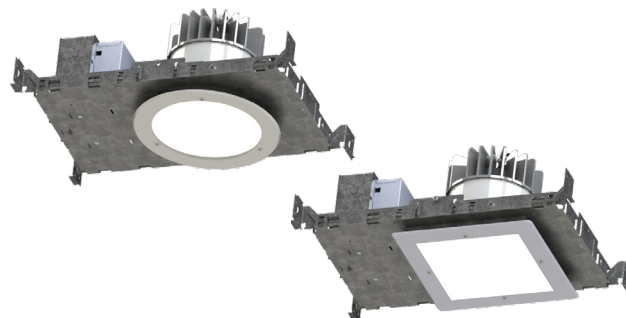


COMPLETECARE™ DOWNLIGHT SERIES

PROJECT: _____
 TYPE: _____
 PRODUCT: _____
 APPROVED BY: _____

PRODUCT FEATURES

- Intended for healthcare applications including Patient Rooms, Exam Rooms, Nurses' Stations, Lobbies and more
- 4" and 6" sealed recessed downlight, round or square aperture options
- Suitable for non-IC and wet location installations (IC Rated housing an option), IK10 listed per IEC60068-2-75: 2014, and IP65 rated per IEC60598
- Variety of wattages and lumen packages, up to 4000lm at 43W (6")
- This product is Made in America and complies with Buy American Act (BAA) and the Build America, Buy America Act (BABAA)



CCDL SERIES

ORDERING INFORMATION

Example: CCDL-4-R-1000LM-30-F-C-PC-90C-UN-DM1



CCDL							
Series	Aperture 4 = 4 inch 6 = 6 inch	Shape R = Round S = Square	Lumen Output* 1000lm - 3000lm Green/Red = 530nm** **Higher lumen packages for 6" only. (4000lm) Subject to change. Performance data on page 3.	Color Temp. 30 = 3000K 35 = 3500K 40 = 4000K 50 = 5000K RGBW = RGB + 4000K AMB = Amber (585-595nm) BLU = Blue (470nm) RGBW = RGB + 4000K	BIOS BIOS Color Temp. B35 = 3500K B40 = 4000K B50 = 5000K BIOS Tunable CCT BTW1 = 3500K-2700K BTW2 = 4000K-2700K Tunable White TW1 = 2700K to 5000K TW2 = 2700K to 6500K	Trim F = Flange T = Trimless	Trim Finish A = .080 Alum. Painted B = 18Ga. CRS Painted C = 18Ga. 304 Brushed* D = 18 Ga. SS Painted* *Additional fees may apply. Consult factory for details.

PC	90C			
Lens PC = .0125 Polycarbonate	CRI 90C = 90 CRI	Voltage 12 = 120V 27 = 277V 34 = 347V UN = Universal (120-277V)	Driver Type DM1 = 0-10V Dimming with 1-100% range DMT = 0-10V & TRIAC/ELV BIOS Driver* STC = Static BIOS** DMB = Dynamic BIOS Dimming*** *BIOS driver requires choice of either static or tunable BIOS options in Color Temp section **0-10V with Dimming from 1%-100% ***0-10V Intensity Dimming to 1% and Dim-to-Dark capabilities Tunable White Driver+ TWD = 2-Channel 0-10V DALI8 DALI8 = 1-Channel Dali8 +Tunable White Driver requires choice of TW1 or TW2 in Color Temp column. Does Not apply to BIOS	Options FZ1 = Fuse (120V) FZ2 = Fuse (277V) EM = Emerg. Battery (Remote)* W = Wing Bracket *If stored, batteries should be fully recharged every six months and kept between 0°C-25°C to maintain optimal battery capacity.



New Star Lighting

2225 W Pershing Rd, Chicago, IL 60609
 (773) 847-1400
www.newstarlighting.com

Specifications and dimensions are subject to change without notice. For additional options and dimensional details, please consult your New Star Lighting representative.

© 2025, New Star Lighting. All rights reserved. Unauthorized duplication or distribution is prohibited.

COMPLETECARE™ DOWNLIGHT SERIES

SPECIFICATIONS

HEAT SINK: Custom diecast aluminum heat sink design for maximum thermal dissipation.

FRAME-IN KIT: 20-gauge die-formed, galvanized steel. Vertically adjustable collar accommodates ceiling thicknesses up to 1.25", adjustable post-installation. telescopic hanger bars come as standard. can be installed in either direction (wing bracket can be ordered as option) for installation with wood and steel frame joists and T-grid ceiling systems spaced up to 24" on center. Quick-access junction box accessible post-installation from above and below ceiling. Includes (7) 1/2" knock-outs to allow straight conduit runs.

TRIM: IP-rated trim/Light engine incorporates the heat sink, LED module, optics and lower trim. Configurable with an IP64-rated Flush lens trim that is secured to the Frame-In kit with hidden torsion springs or an IP65 Flush lens trim secured with three (Round) or four (Square) tamper resistant (Torx®) captive fasteners. Closed-cell gasketing at ceiling flange. See Trim Ordering Information for available options.

OPTICAL: Round or Square aperture. Diffuse Acrylic upper lens. 1/8" clear impact-resistant acrylic or polycarbonate flush lens at ceiling trim. Continuous seal between lens and trim ring. Available with various reflector finishes. See Ordering Information for available options.

ELECTRICAL: LED source available in multiple CCT and CRI combinations with a maximum 3-step MacAdam variation allowance. See Trim Ordering Information for available options. 120-277VAC or 347VAC, 50/60Hz electrical input with serviceable constant current driver (<20% THD, >0.90 PF). Minimum 85% driver efficiency. Standard 0-10V dimming with 1-100% range and dim-to-dark capabilities; 0.2mA maximum source current. Optional eldoLED ECOdrive DALI-2/LEDcode2 driver with 1-100% range.

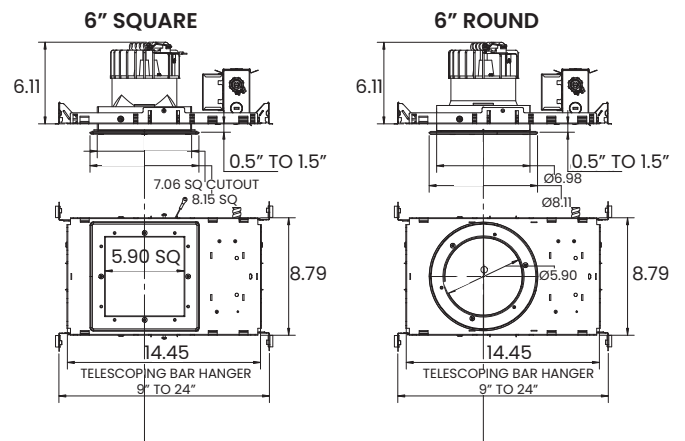
Optional BIOS® SkyBlue® circadian solutions to produce the healthy "blue sky" light signal with blue spectrum peak at 490nm + for circadian entrainment. Bio-Dimming™ reduces CCT by 2700K.

INSTALLATION: Recessed drywall and grid installation. Frame adjustable to ceiling thickness 0.5" to 1.25".

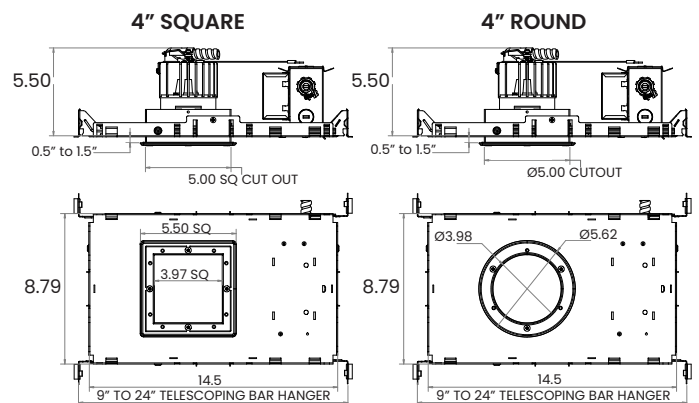
LABEL: Fixture is certified to UL standards by Intertek Testing Laboratory for non-IC and wet location installations. IP65 Rating per IEC60598. Certified for NSF2 Splash Zone/ Non-Food Zones. This product is Made in America and complies with Buy American Act (BAA) and the Build America, Buy America Act (BABAA).

DIMENSIONAL DATA

6" DOWNLIGHT



4" DOWNLIGHT



New Star Lighting

2225 W Pershing Rd, Chicago, IL 60609
(773) 847-1400
www.newstarlighting.com

Specifications and dimensions are subject to change without notice. For additional options and dimensional details, please consult your New Star Lighting representative.

© 2025, New Star Lighting. All rights reserved. Unauthorized duplication or distribution is prohibited.

COMPLETECARE™ DOWNLIGHT SERIES

PERFORMANCE DATA

6IN Downlight Wide beam, 1500lm Engine, 115lm/W at 18.75W

SERIES	SHAPE	LUMENS OUTPUT	CCT	DELIVERED LUMENS	EFFICACY	SYSTEM WATTS
CCDL6	R	LW= LOW	40K	1405	101.8	13.8
		STD= STANDARD	40K	2081	102.5	20.3
		MD= MEDIUM	40K	2736	101.0	27.1
		HG= HIGH	40K	4181	95.5	43.8

SERIES	SHAPE	LUMENS OUTPUT	CCT	DELIVERED LUMENS	EFFICACY	SYSTEM WATTS
CCDL6	S	LW= LOW	40K	1392	100.7	13.8
		STD= STANDARD	40K	2070	101.7	20.3
		MD= MEDIUM	40K	2760	101.6	27.1
		HG= HIGH	40K	3990	95.9	41.5

SERIES	SHAPE	LUMENS OUTPUT	CCT	DELIVERED LUMENS	EFFICACY	SYSTEM WATTS
CCDL4	R	LW= LOW	40K	1260	84	14
		STD= STANDARD	40K	1450	83	18
		MD= MEDIUM	40K	1650	81	21
		HG= HIGH	40K	2172	77	28

SERIES	SHAPE	LUMENS OUTPUT	CCT	DELIVERED LUMENS	EFFICACY	SYSTEM WATTS
CCDL4	S	LW= LOW	40K	1257	84	14
		STD= STANDARD	40K	1525	84	18
		MD= MEDIUM	40K	1750	83	21
		HG= HIGH	40K	2236	79	28



New Star Lighting

2225 W Pershing Rd, Chicago, IL 60609
(773) 847-1400
www.newstarlighting.com

Specifications and dimensions are subject to change without notice. For additional options and dimensional details, please consult your New Star Lighting representative.

© 2025, New Star Lighting. All rights reserved. Unauthorized duplication or distribution is prohibited.