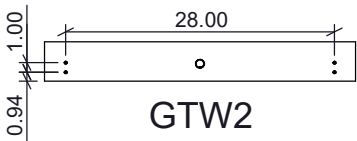


Fixture Family: GTW Series

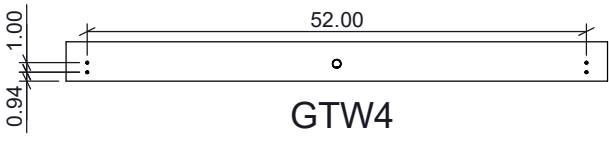
Description: Mullion Mount Installation

IMPORTANT SAFETY INSTRUCTIONS

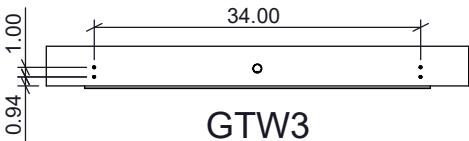
- This product must be installed in accordance with the applicable installation code by a person familiar with the construction and operation of the product and the hazards involved.
 - Disconnect power before beginning installation.
 - Luminaire must be installed in compliance with the National Electric Code and any local codes for the hazardous locations involved.
 - To be installed only by a qualified electrician.
- Proper grounding is required to ensure personal safety.
 - Read all markings and labels to ensure correct installation of luminaire.
 - Risk of fire, use minimum of 90C supply connectors.
 - Figures shown in these instructions may not represent all housing, frame, and output configurations. Installation steps will remain the same across configurations. If additional information is needed, please contact New Star Lighting.



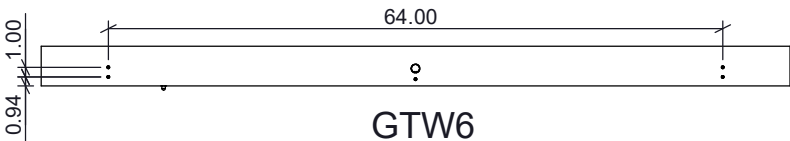
GTW2



GTW4

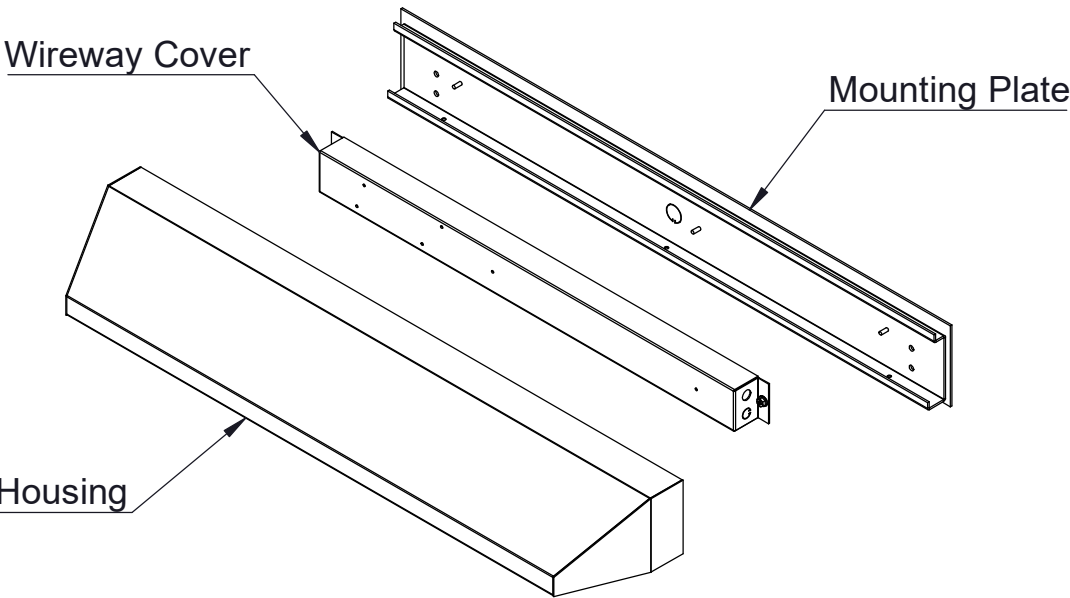


GTW3



GTW6

All mounting holes are Ø0.28" and access holes are Ø0.90".



Installer is responsible for adequately reinforcing walls and/or ceiling to support luminaire weight.

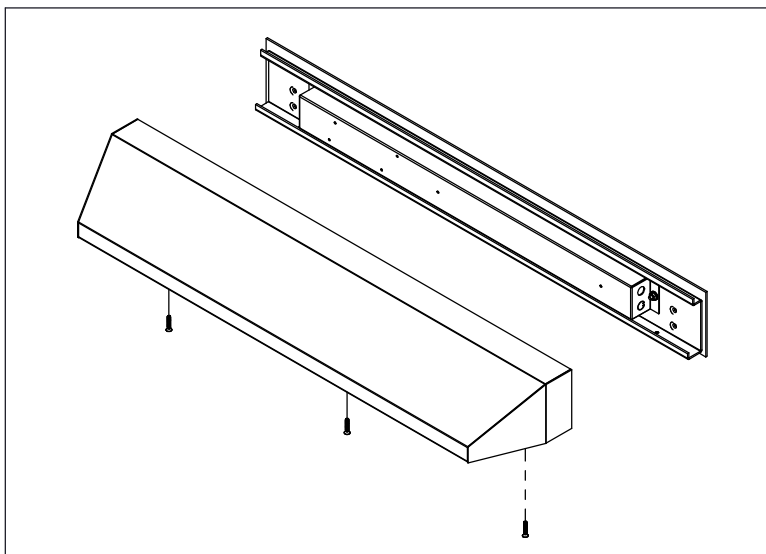


Figure 1

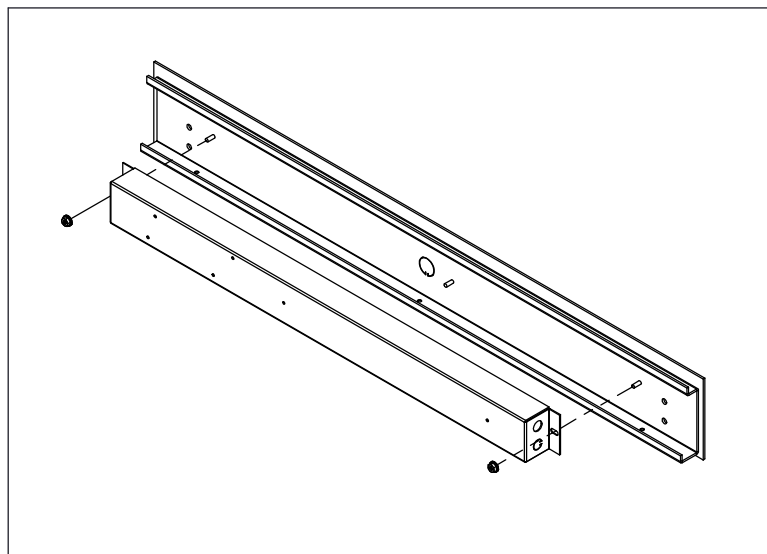


Figure 2

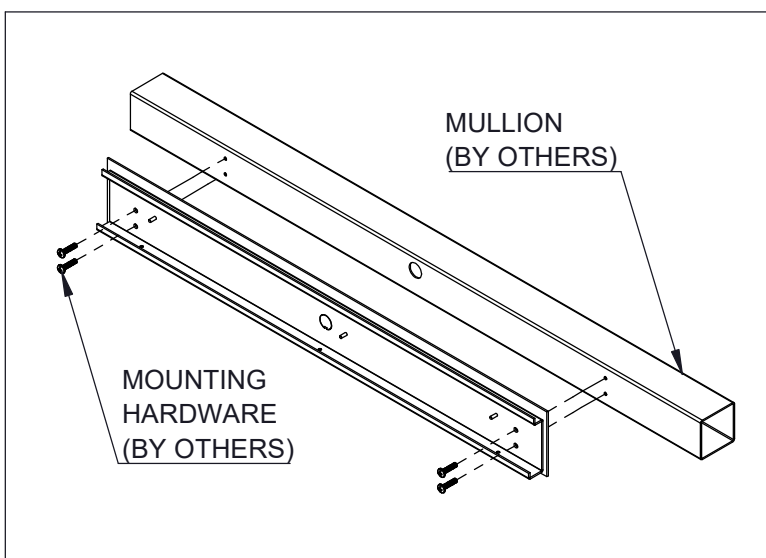


Figure 3

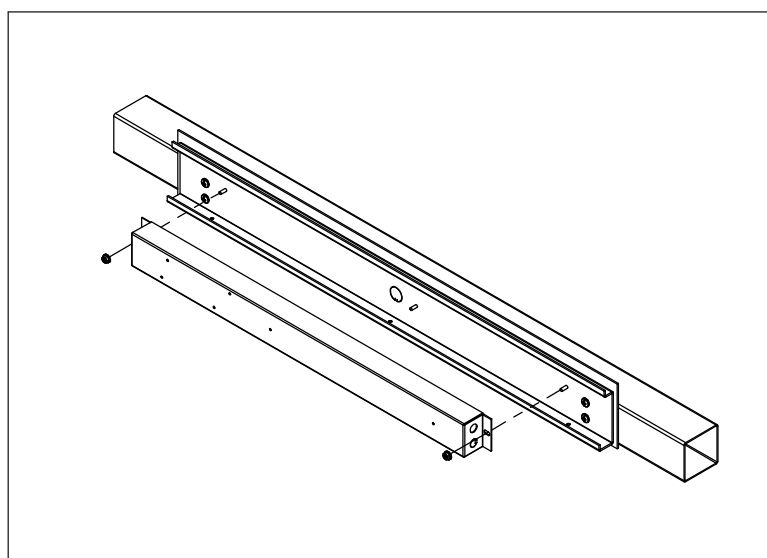


Figure 4

INSTALLATION STEPS

1. Remove housing screws, then remove Mounting Plate from Housing (Fig. 1).
2. Remove wireway cover screws, then remove Wireway Cover from Mounting Plate (Fig. 2).
3. Attach Mounting Plate to Mullion (provided by others) with Mounting Hardware (provided by others) (Fig. 3).
4. Make all necessary electrical connections and reattach Wireway Cover to Mounting Plate with wireway cover screws (Fig. 4).

Installer is responsible for adequately reinforcing walls and/or ceiling to support luminaire weight.

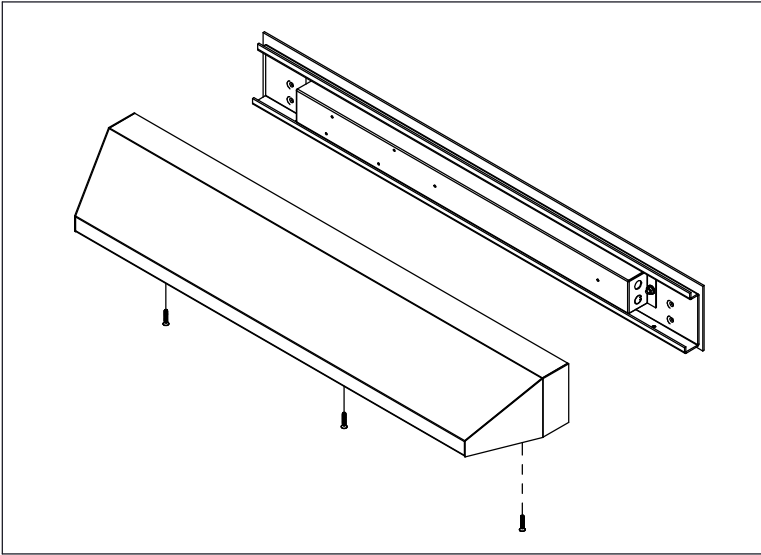


Figure 5

INSTALLATION STEPS

5. Reattach Housing to the Mounting Plate with housing screws (Fig. 5).