

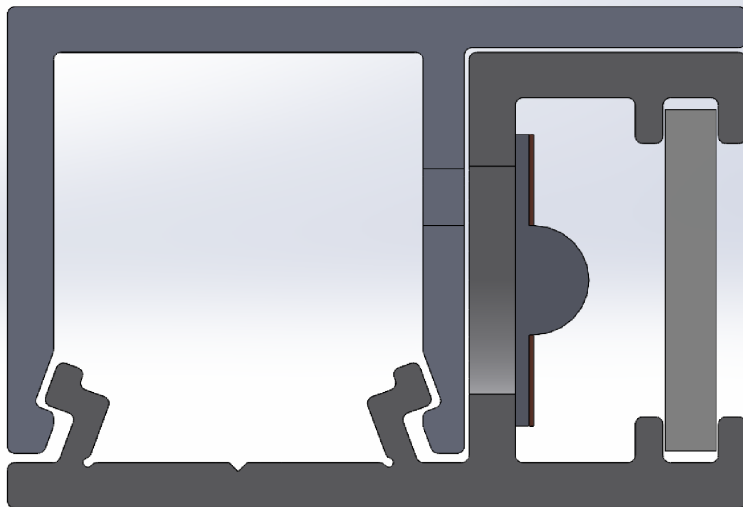
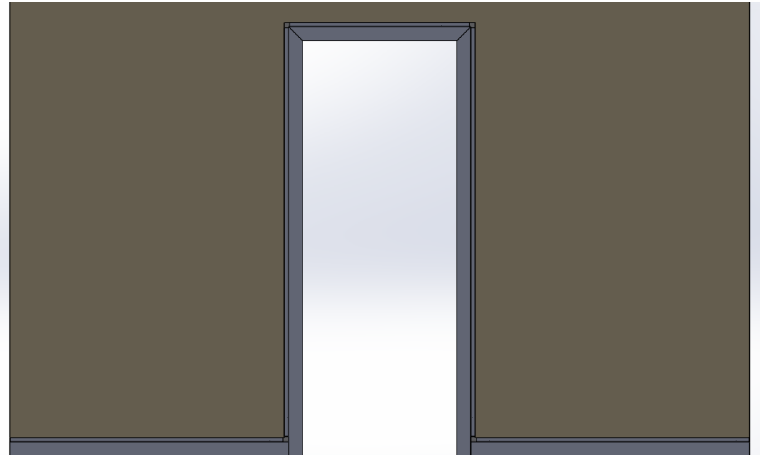
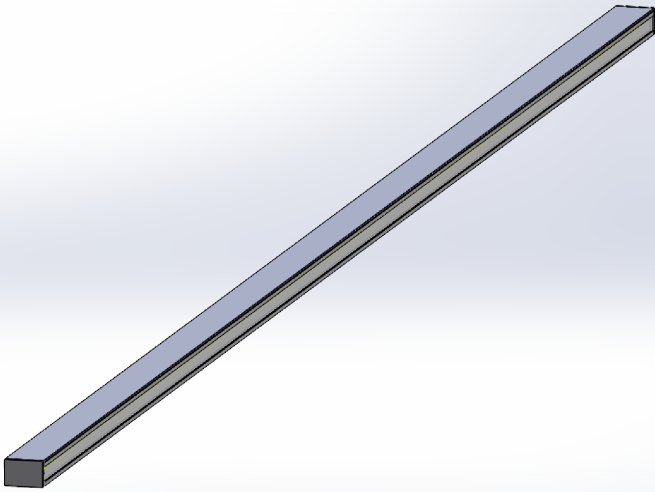
INSTALLATION INSTRUCTIONS

Fixture Family: COMPLETECARE DOOR SURROUND SERIES

Description: CCDSS - SURFACE MOUNT INSTALLATION INSTRUCTIONS

IMPORTANT SAFETY INSTRUCTIONS

- This product must be installed in accordance with all applicable installation codes by a person familiar with the construction and operation of the product and the hazards involved.
- Disconnect power before beginning installation.
- Fixture must be installed in compliance with the National Electric Code and any local codes.
- To be installed only by a qualified electrician.
- Proper grounding is required to ensure personal safety.
- Read all fixture markings and labels to ensure correct installation of fixture.
- Risk of fire, use minimum of 90C supply connectors.
- These instructions may not cover all details or variations. If additional information is needed, please contact New Star Lighting.



Installer is responsible for adequately reinforcing walls and/or ceiling to support luminaire weight. These instructions do not claim to cover all details or variations in the equipment, procedure, or process. Specifications and dimensions are subject to change.

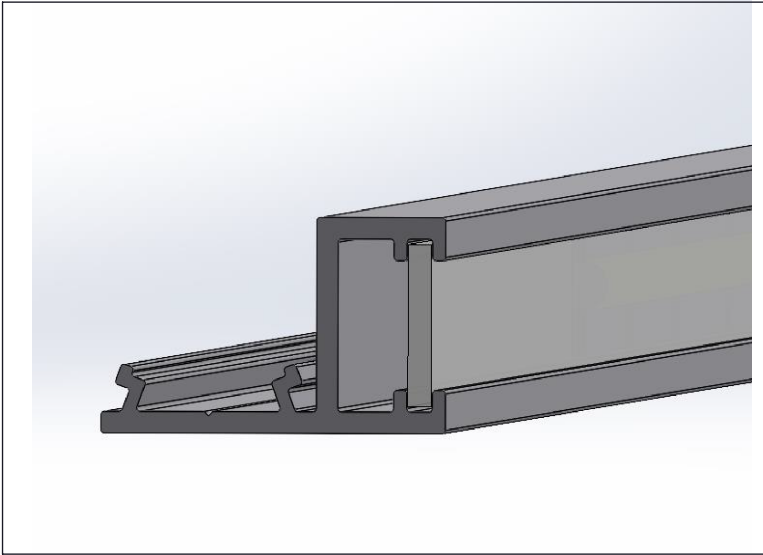


Figure 1

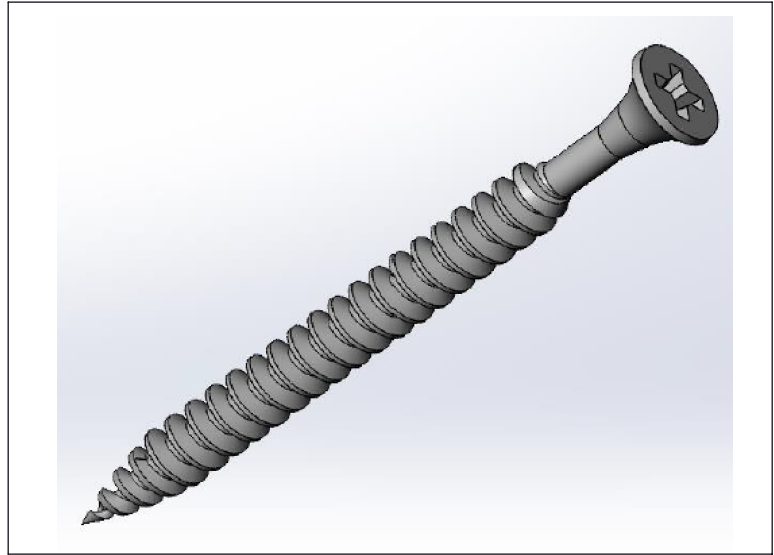


Figure 2

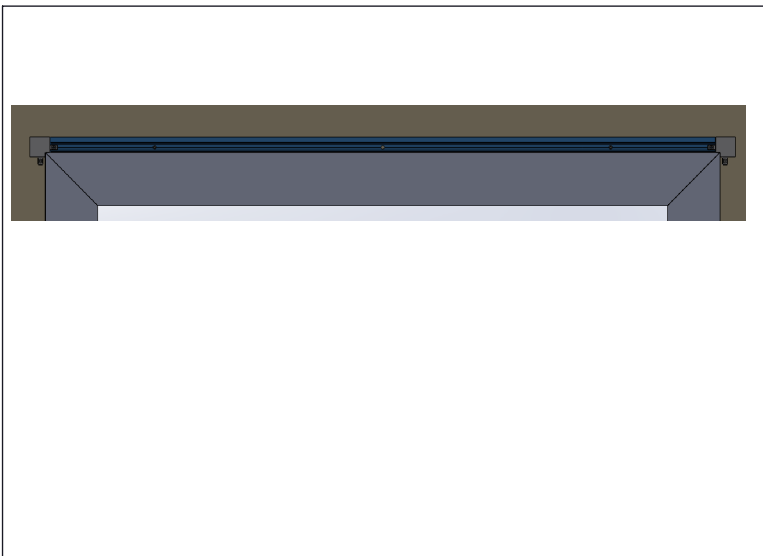


Figure 3

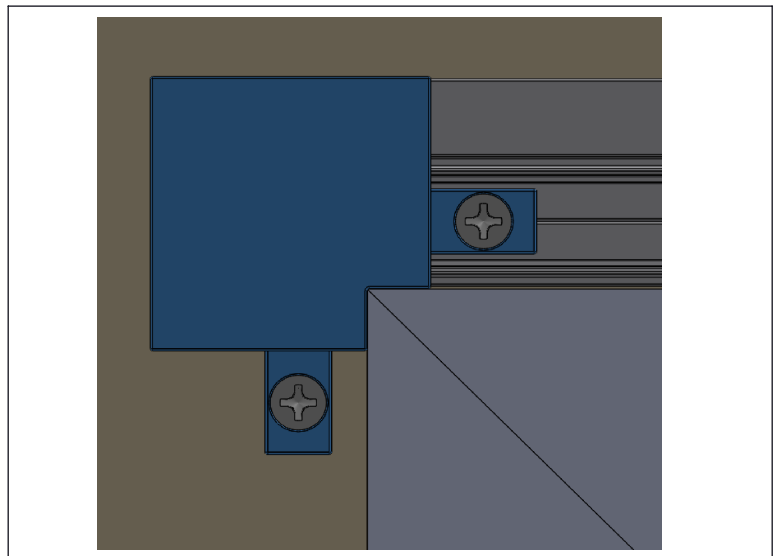


Figure 4

INSTALLATION STEPS

1. Install LED Housing on the wall using suitable #6 screw for joining drywall to metal.
2. #6 screw (supplied by others) to be installed in mounting holes pre-drilled at factory.
3. Install the appropriate LED Housing segment and corner hubs on the wall above the doorframe.
4. Detailed view of the corner hub.

Installer is responsible for adequately reinforcing walls and/or ceiling to support luminaire weight. These instructions do not claim to cover all details or variations in the equipment, procedure, or process. Specifications and dimensions are subject to change.

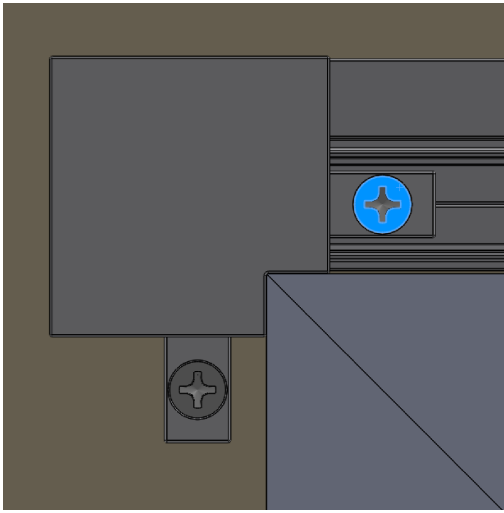


Figure 5



Figure 6



Figure 7

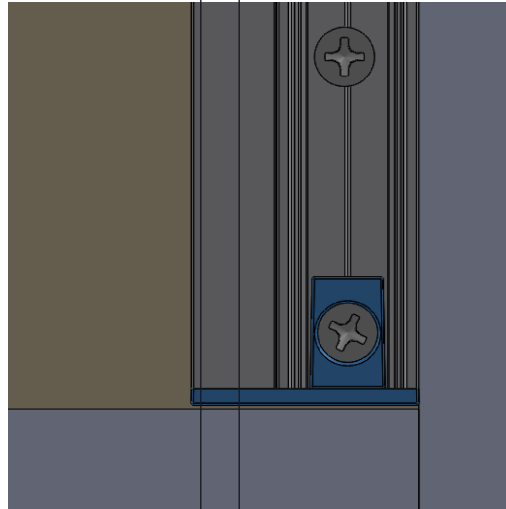


Figure 8

INSTALLATION STEPS

5. Secure corner hub to housing extrusion.
6. #4-40 screw (supplied by New Star) to be installed for corner hub.
7. Install the vertical portions of the housing extrusions
8. Install the end cap caps on the housing where the fixture meets the lower molding. Use the same screw from Step 6 for securing the end caps.

Installer is responsible for adequately reinforcing walls and/or ceiling to support luminaire weight. These instructions do not claim to cover all details or variations in the equipment, procedure, or process. Specifications and dimensions are subject to change.

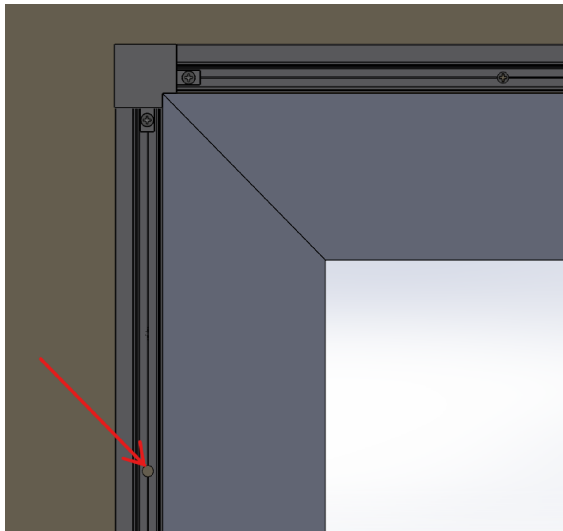


Figure 9

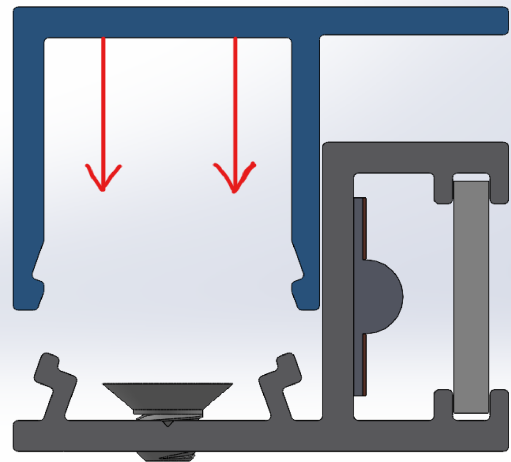


Figure 10

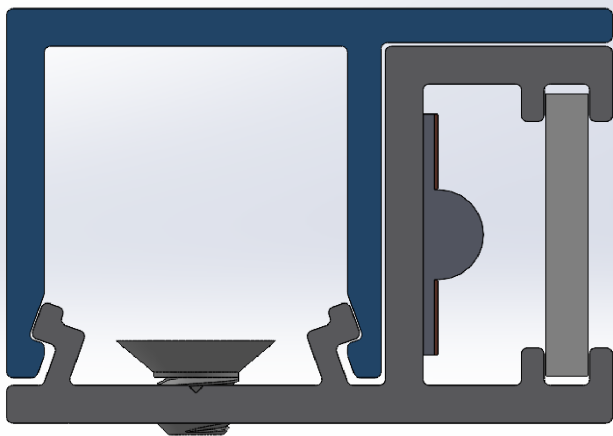


Figure 11

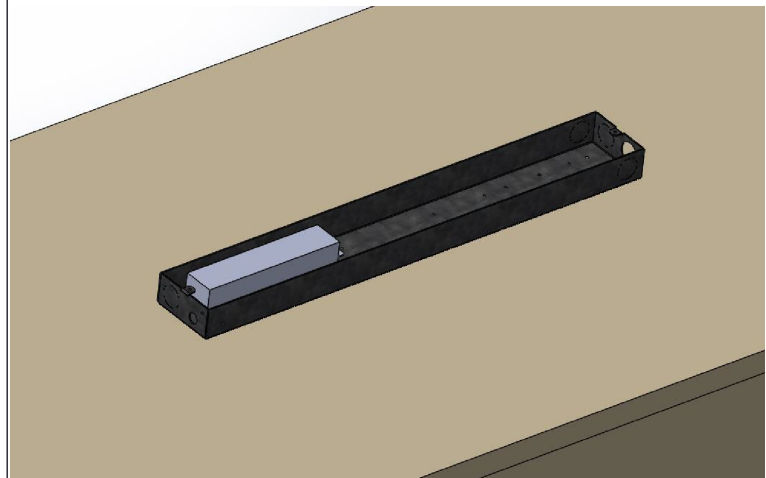


Figure 12

INSTALLATION STEPS

9. Drill holes in fixture LED housing as required to pass low voltage wires.
10. Snap in the fixture Cover to hide the mounting holes and wire channel.
11. Fixture cover snapped in.
12. Wire the low voltage wires from the fixture to the remote driver box.

Installer is responsible for adequately reinforcing walls and/or ceiling to support luminaire weight. These instructions do not claim to cover all details or variations in the equipment, procedure, or process. Specifications and dimensions are subject to change.

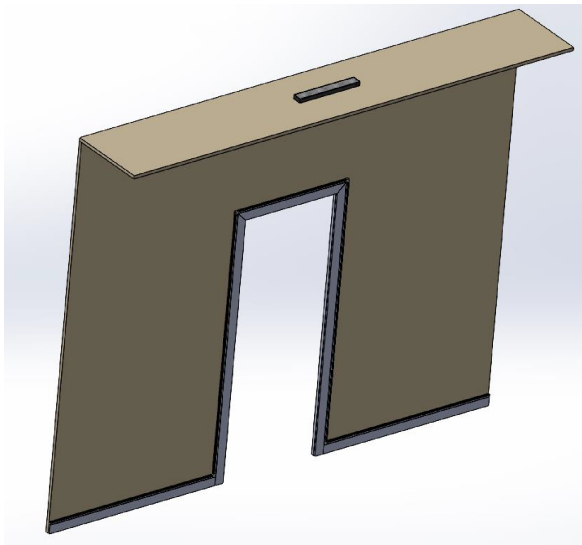
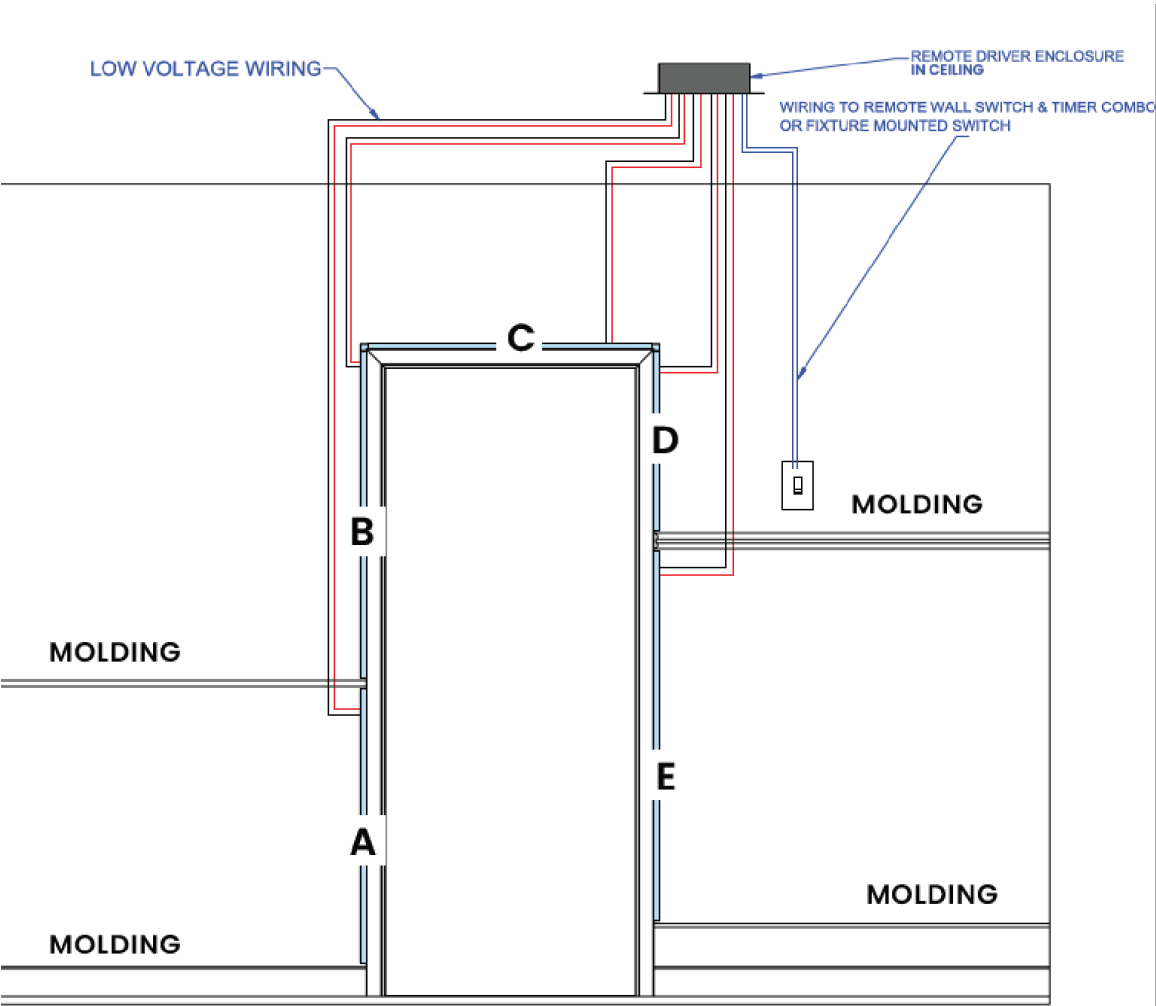


Figure 13

INSTALLATION STEPS

13. Remote driver box is located above the ceiling plane, or other suitable & accessible location.



Installer is responsible for adequately reinforcing walls and/or ceiling to support luminaire weight. These instructions do not claim to cover all details or variations in the equipment, procedure, or process. Specifications and dimensions are subject to change.