



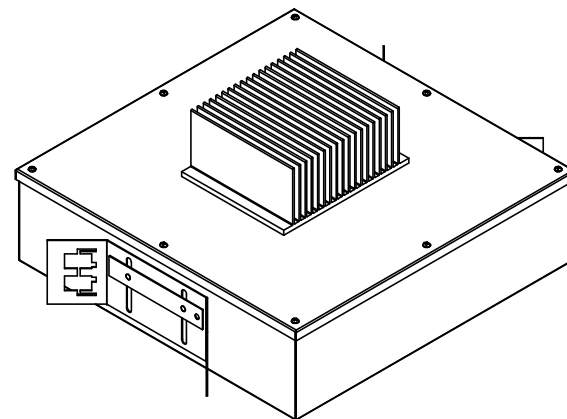
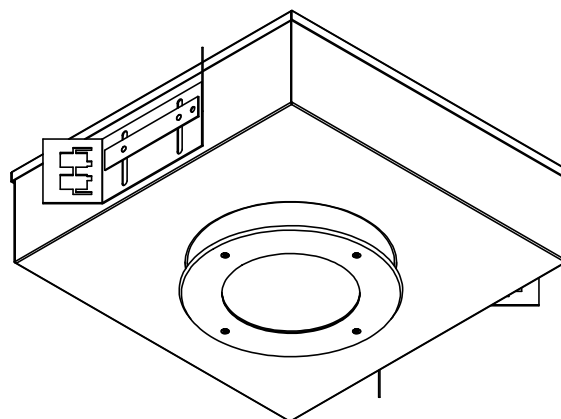
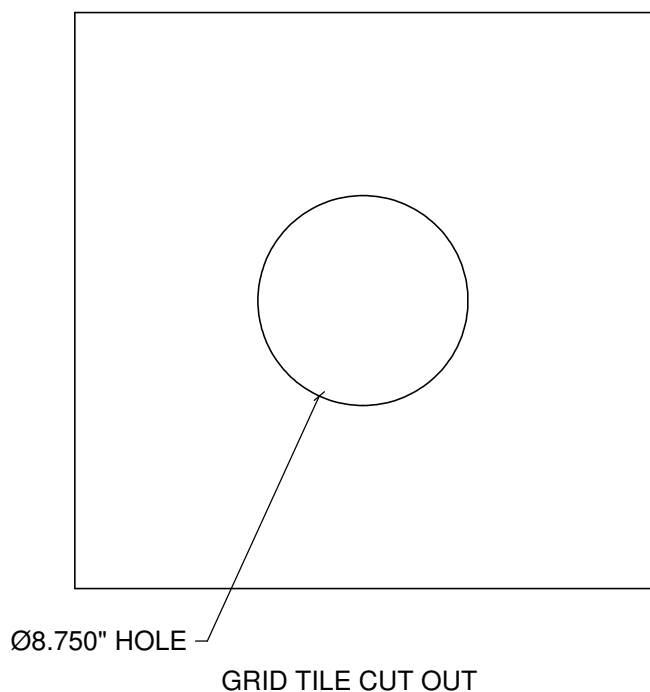
DLM6 – Grid Installation Instructions

2225 W Pershing Rd. Chicago, IL 60609 - 773.847.1400 - www.newstarlighting.com

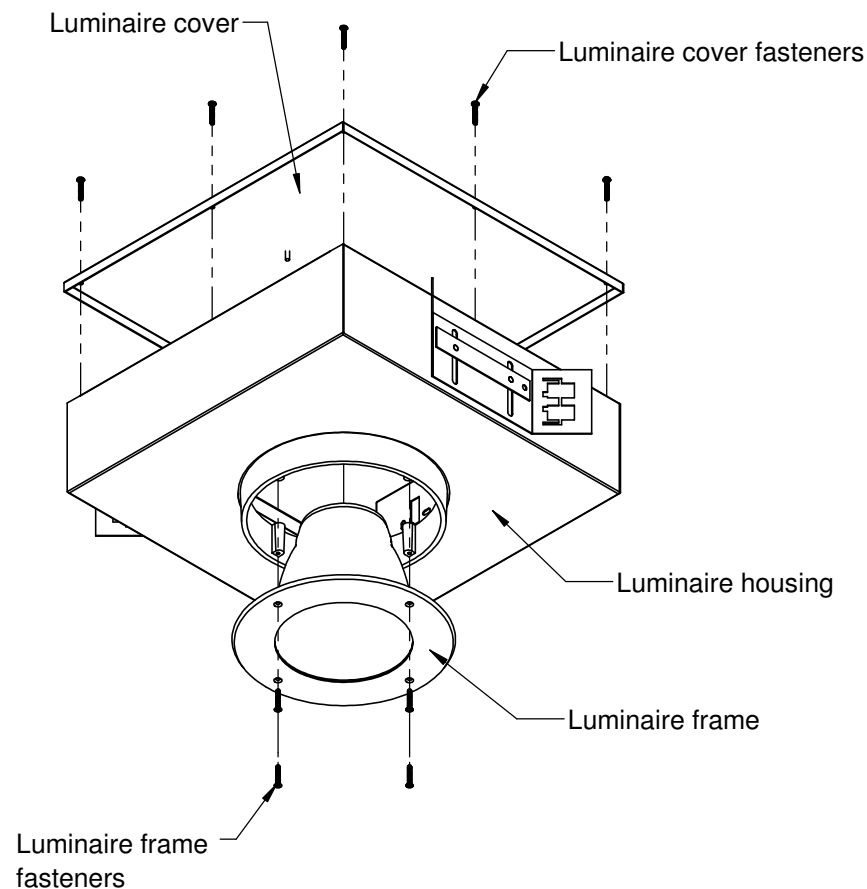
IMPORTANT SAFE GUARDS:

- THIS PRODUCT MUST BE INSTALLED IN ACCORDANCE WITH THE APPLICABLE INSTALLATION CODE BY A PERSON FAMILIAR WITH THE CONSTRUCTION AND OPERATION OF THE PRODUCT AND THE HAZARDS INVOLVED.
- DISCONNECT POWER BEFORE BEGINNING INSTALLATION.
- FIXTURE MUST BE INSTALLED IN COMPLIANCE WITH THE NATIONAL ELECTRIC CODE AND ANY LOCAL CODES.
- TO BE INSTALLED ONLY BY A QUALIFIED ELECTRICIAN.
- PROPER GROUNDING IS REQUIRED TO INSURE PERSONAL SAFETY.
- READ ALL FIXTURE MARKINGS AND LABELS TO ENSURE CORRECT INSTALLATION OF FIXTURE.
- RISK OF FIRE, USE A MINIMUM OF 90C SUPPLY CONNECTORS.

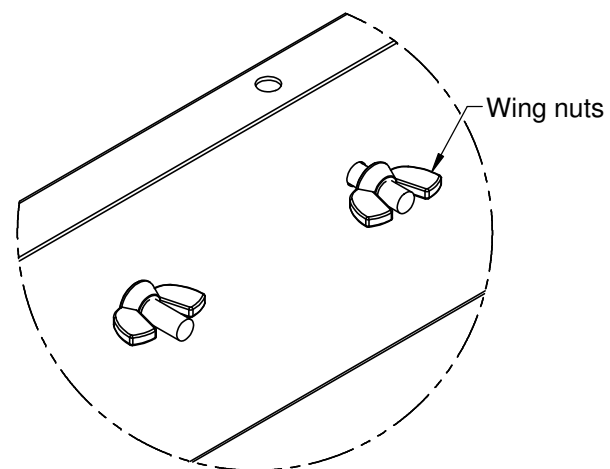
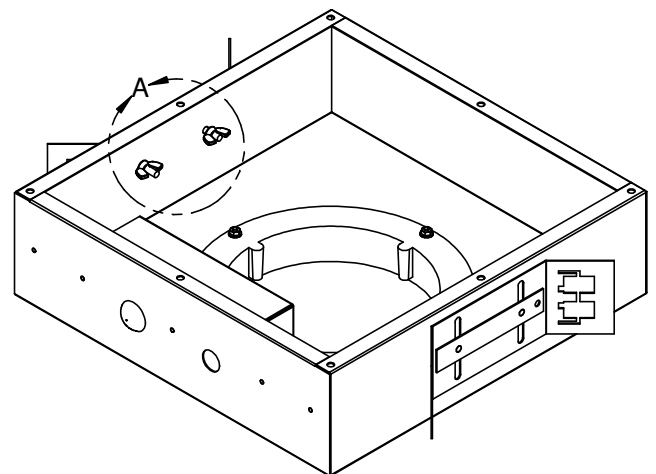
INSTALLATION INSTRUCTIONS:



1. Remove luminaire frame and cover.



2. Loosen wing nuts for later fixture height adjustability .



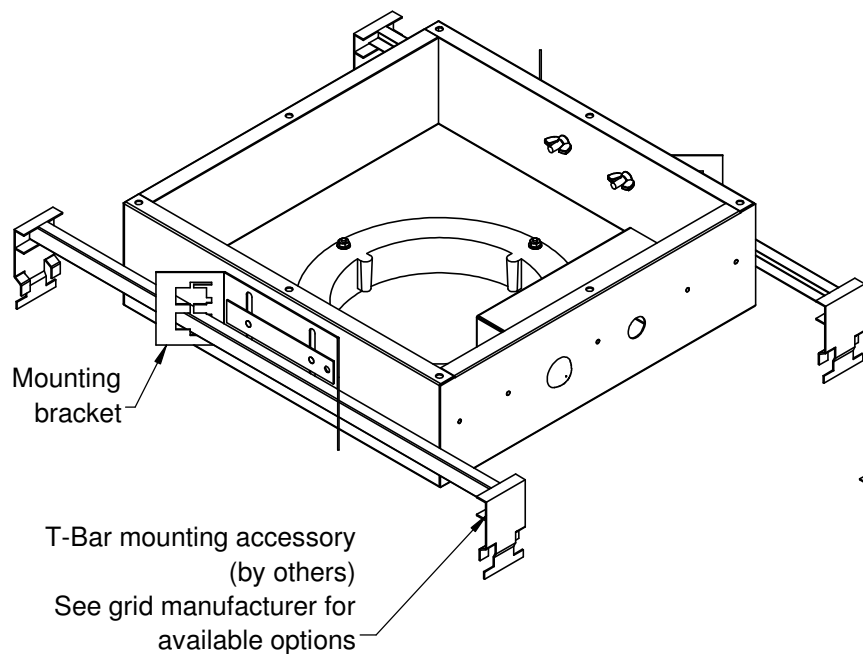
DETAIL A
SCALE 1 : 2



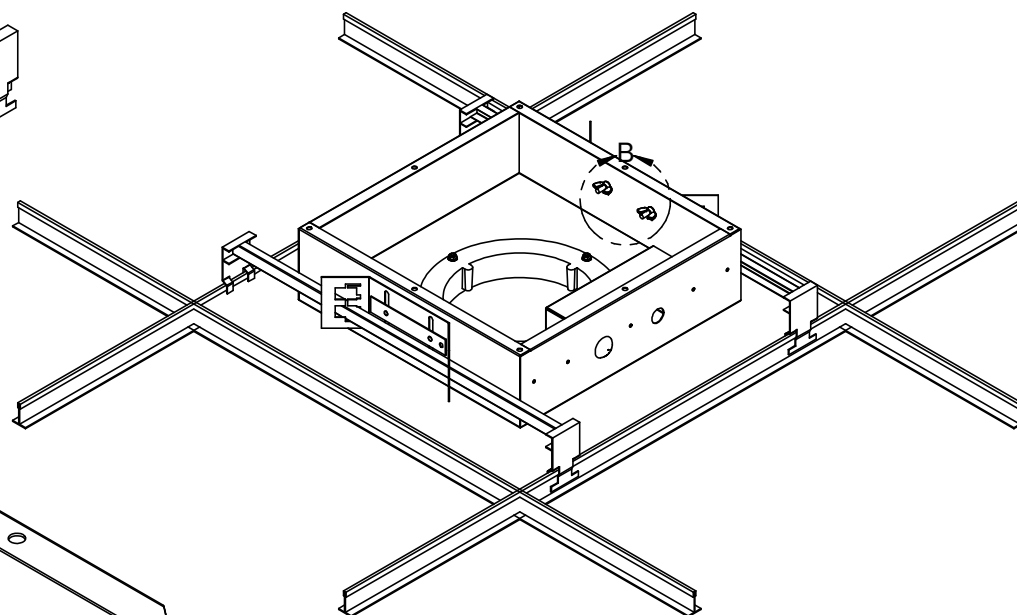
DLM6 – Grid Installation Instructions

2225 W Pershing Rd. Chicago, IL 60609 - 773.847.1400 - www.newstarlighting.com

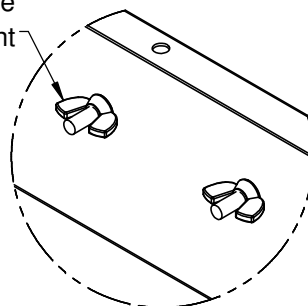
3. Attach T-Bar mounting accessory (by others) to mounting brackets.



4. Place fixture in grid ceiling securing T-Grid mounting accessory (by others) to T-Bars.



Tighten wing nuts to secure fixture height



DETAIL B
SCALE 1 : 3



DLM6 – Grid Installation Instructions

2225 W Pershing Rd. Chicago, IL 60609 - 773.847.1400 - www.newstarlighting.com

5. After making necessary electrical connections, resecure luminaire cover and frame.

