

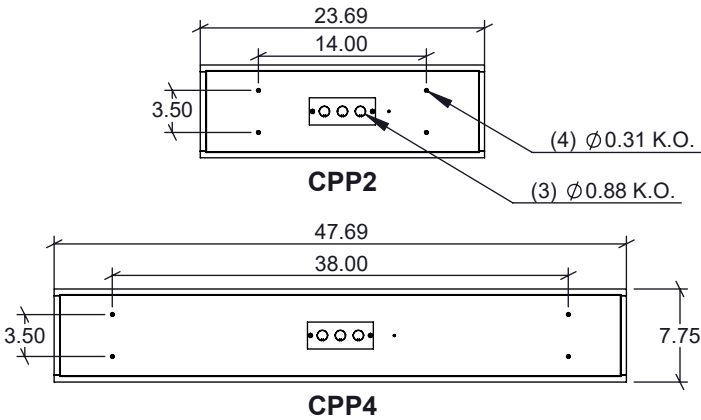
Fixture Family: CPP

Description: Compro Series - Flange Mount Fixture

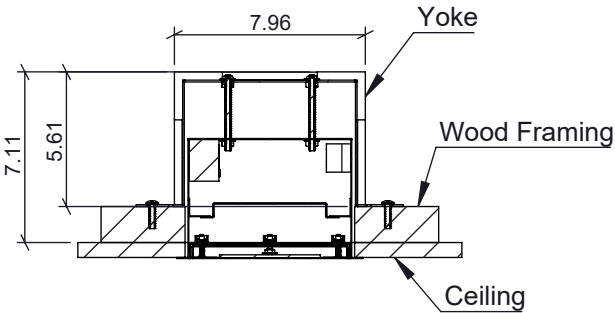
IMPORTANT SAFETY INSTRUCTIONS

- This product must be installed in accordance with all applicable installation codes by a person familiar with the construction and operation of the product and the hazards involved.
 - Disconnect power before beginning installation.
 - Fixture must be installed in compliance with the National Electric Code and any local codes.
 - To be installed only by a qualified electrician.
- Proper grounding is required to ensure personal safety.
 - Read all fixture markings and labels to ensure correct installation of fixture.
 - Risk of fire, use minimum of 90C supply connectors.
 - These instructions may not cover all details or variations. If additional information is needed, please contact New Star Lighting.

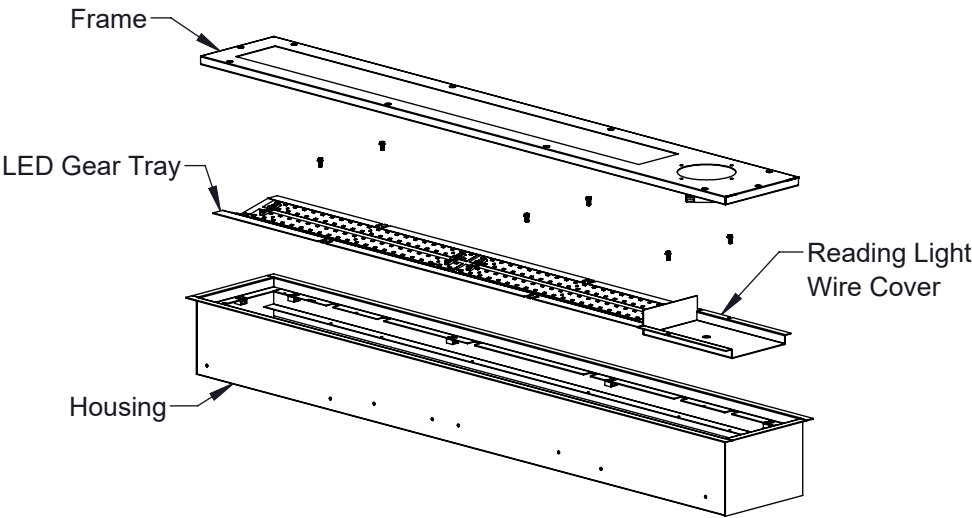
DIMENSIONAL DATA



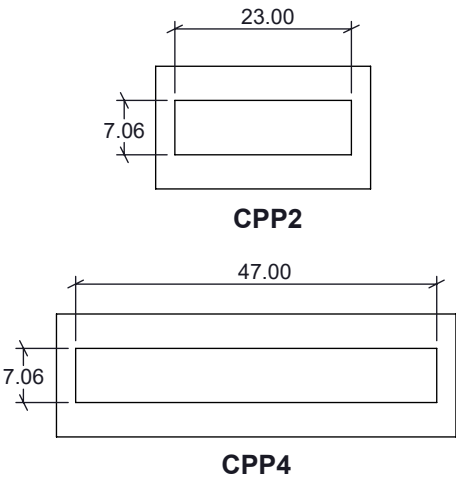
SIDE VIEW



EXPLODED VIEW



CEILING CUT-OUT



Installer is responsible for adequately reinforcing walls and/or ceiling to support luminaire weight. These instructions do not claim to cover all details or variations in the equipment, procedure, or process. Specifications and dimensions are subject to change.

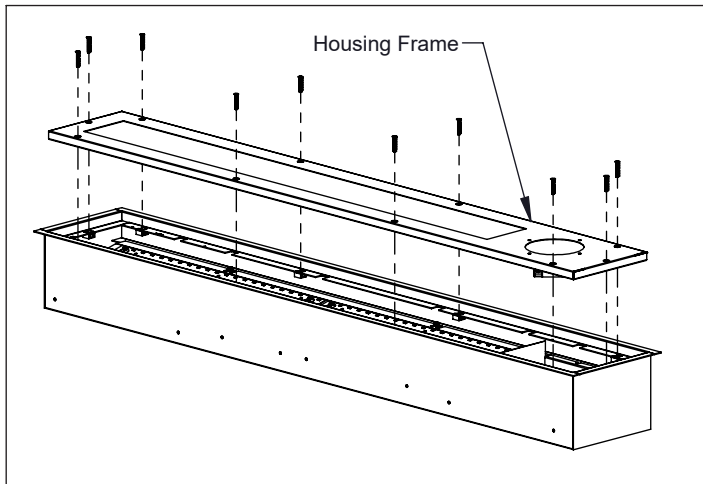


Figure 1

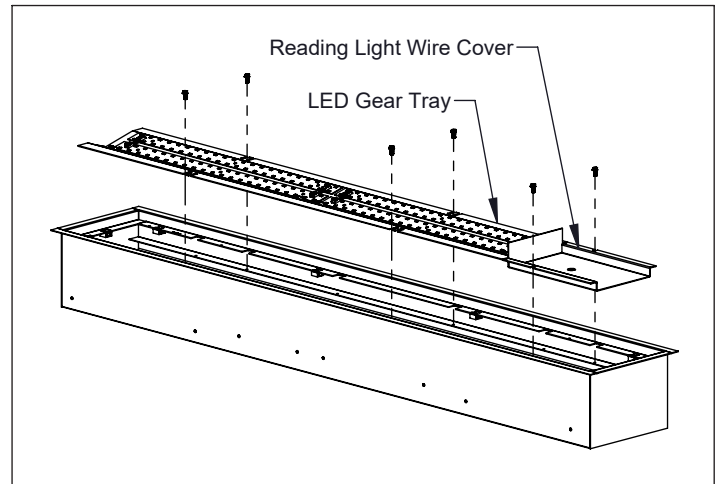


Figure 2

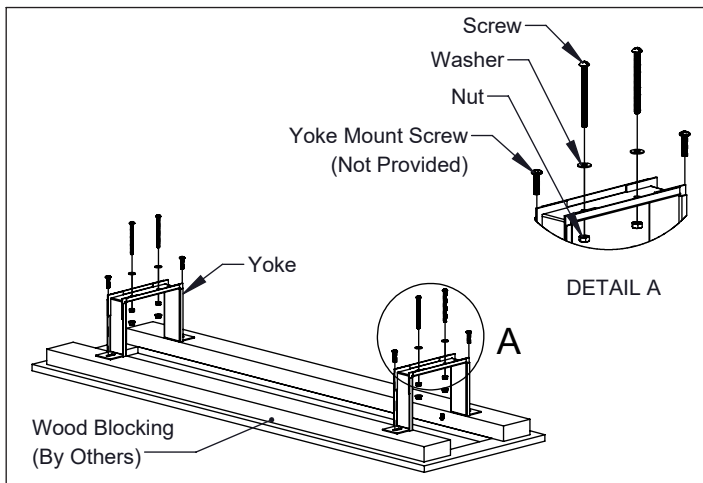


Figure 3

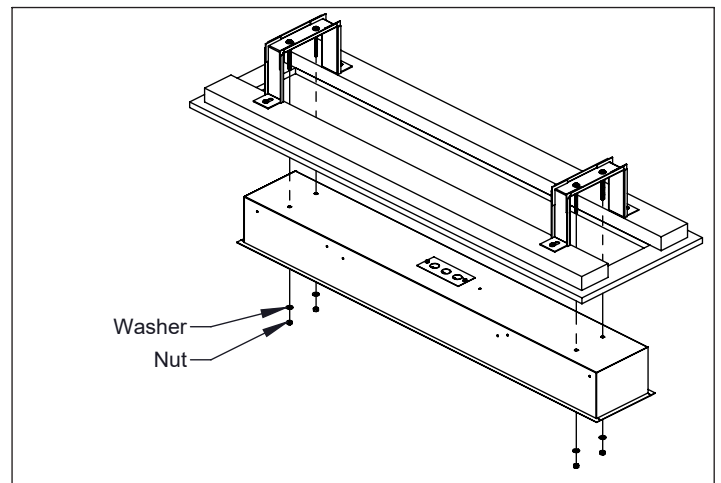


Figure 4

CEILING MOUNT

1. Remove screws from Frame to open fixture. (Fig. 1)
2. Remove screws from (2) wire covers to detach from housing. (Fig. 2)
3. Adjust mounting yokes in ceiling with wood blocking and install hardware . (Fig. 3)
[See dimensional data for yoke mounting location]
4. Remove (4) knockouts from housing before raising fixture into the ceiling and mount to yokes. Make necessary electrical connections. Re-attach wirecovers and housing frame to complete installation. (Fig. 4)

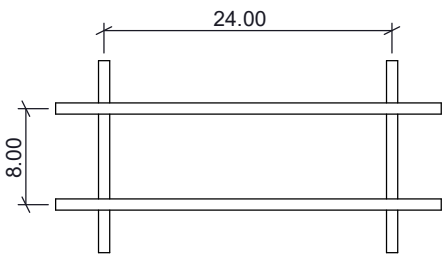
Installer is responsible for adequately reinforcing walls and/or ceiling to support luminaire weight. These instructions do not claim to cover all details or variations in the equipment, procedure or process. Specifications and dimensions are subject to change.

Fixture Family: CPP

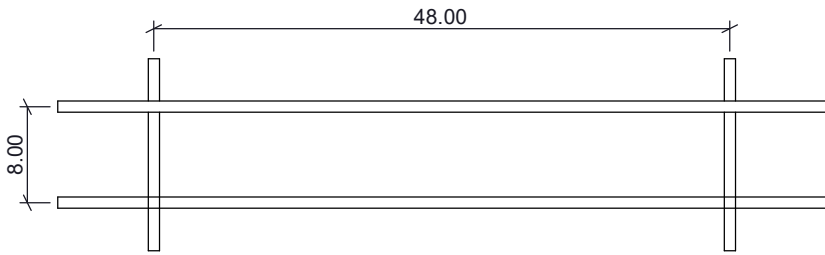
Description: Ceiling Mount Fixture

IMPORTANT SAFETY INSTRUCTIONS

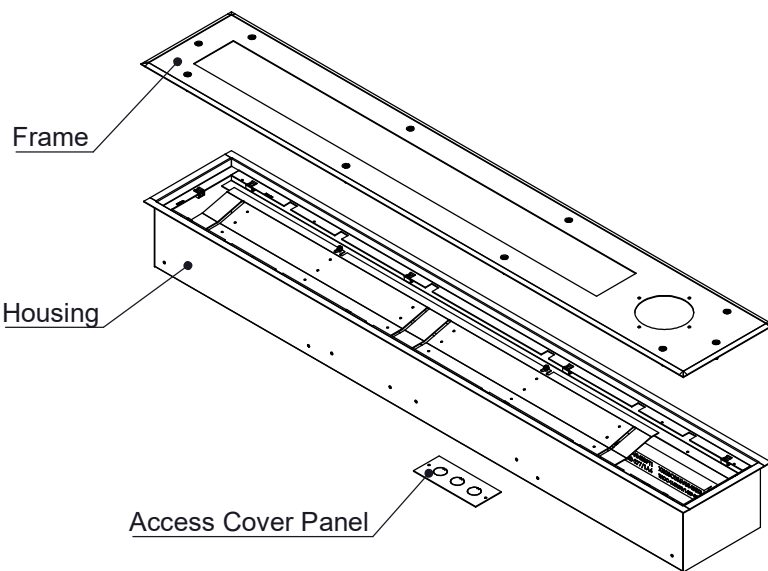
- This product must be installed in accordance with all applicable installation codes by a person familiar with the construction and operation of the product and the hazards involved.
 - Disconnect power before beginning installation.
 - Fixture must be installed in compliance with the National Electric Code and any local codes.
 - To be installed only by a qualified electrician.
- Proper grounding is required to ensure personal safety.
 - Read all fixture markings and labels to ensure correct installation of fixture.
 - Risk of fire, use minimum of 90C supply connectors.
 - These instructions may not cover all details or variations. If additional information is needed, please contact New Star Lighting.



CPP2 GRID LAYOUT



CPP4 GRID LAYOUT



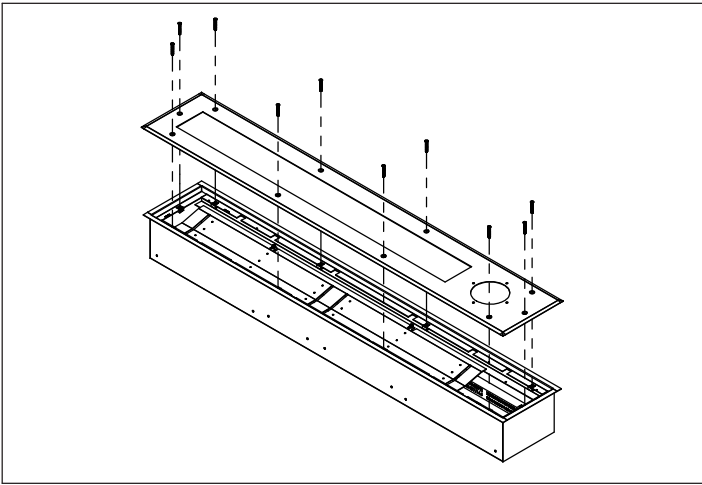


Figure 1

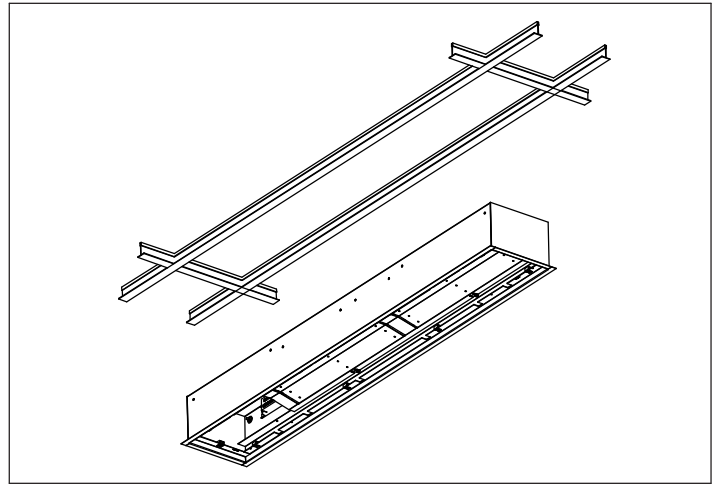


Figure 2

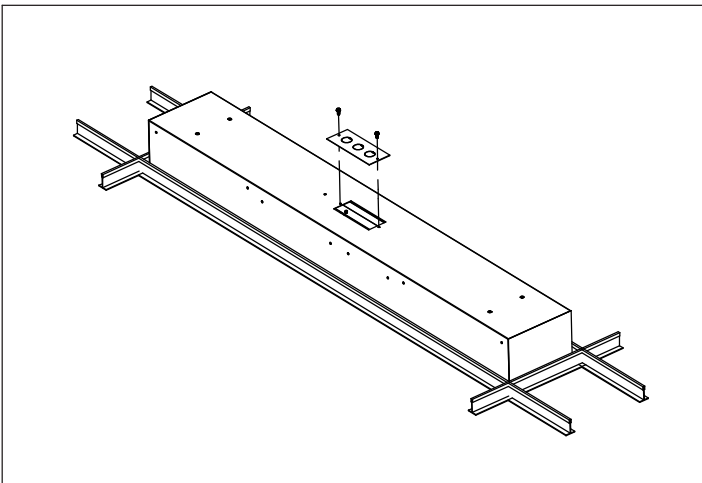


Figure 3

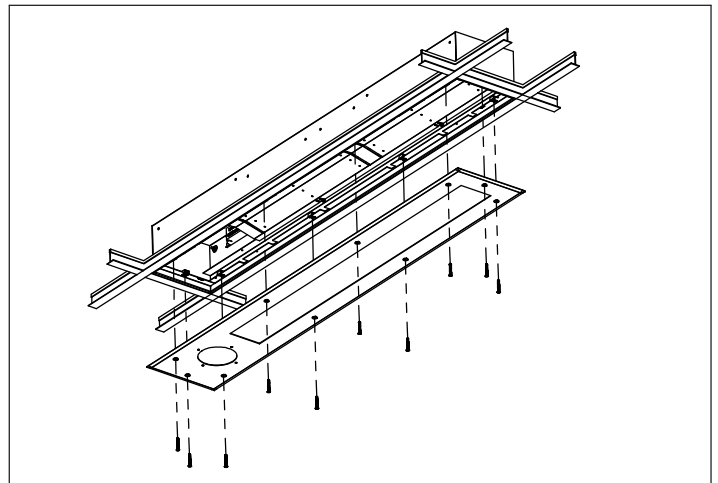


Figure 4

CEILING MOUNT

1. Remove screws from Frame to open fixture. (Fig. 1)
2. Raise fixture into ceiling. (Fig. 2)
3. Remove Access Cover Panel and make all necessary electrical connections. (Fig. 3)
4. Re-attach Frame to Housing. (Fig. 4)

Installer is responsible for adequately reinforcing walls and/or ceiling to support luminaire weight. These instructions do not claim to cover all details or variations in the equipment, procedure or process. Specifications and dimensions are subject to change.