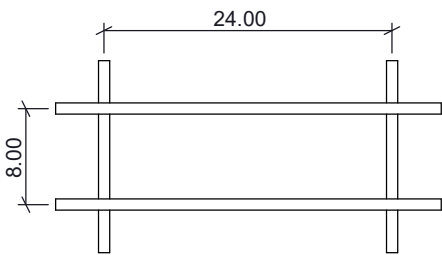


Fixture Family: CPP

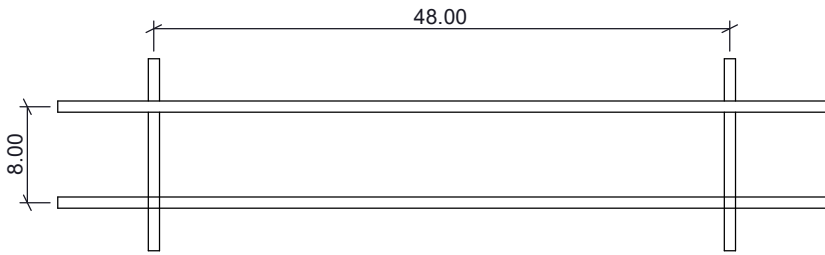
Description: Ceiling Mount Fixture

IMPORTANT SAFETY INSTRUCTIONS

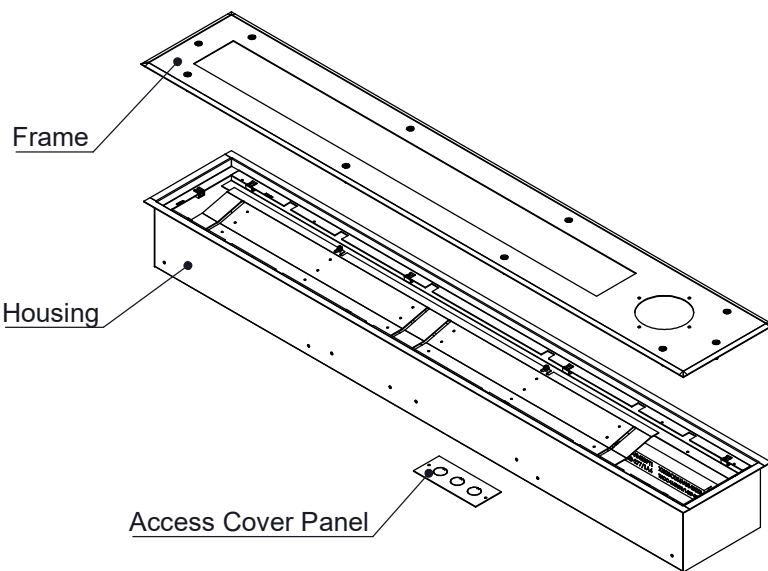
- This product must be installed in accordance with all applicable installation codes by a person familiar with the construction and operation of the product and the hazards involved.
  - Disconnect power before beginning installation.
  - Fixture must be installed in compliance with the National Electric Code and any local codes.
  - To be installed only by a qualified electrician.
- Proper grounding is required to ensure personal safety.
  - Read all fixture markings and labels to ensure correct installation of fixture.
  - Risk of fire, use minimum of 90C supply connectors.
  - These instructions may not cover all details or variations. If additional information is needed, please contact New Star Lighting.



CPP2 GRID LAYOUT



CPP4 GRID LAYOUT



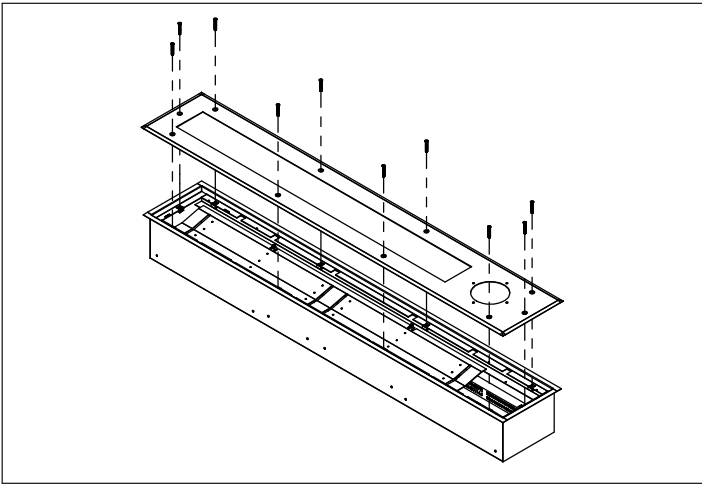


Figure 1

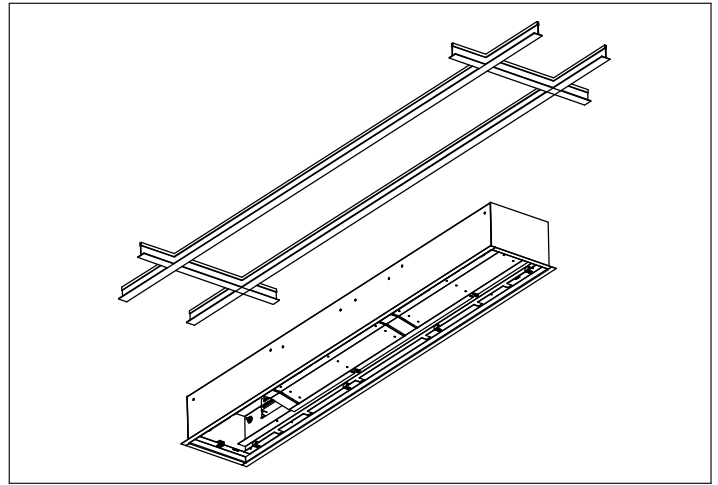


Figure 2

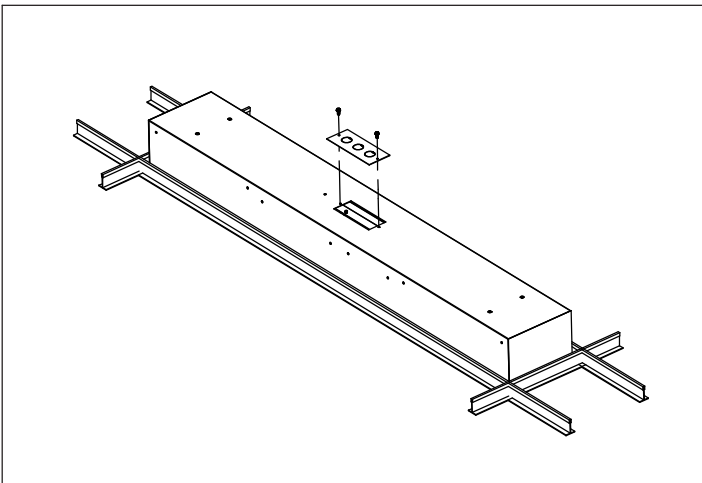


Figure 3

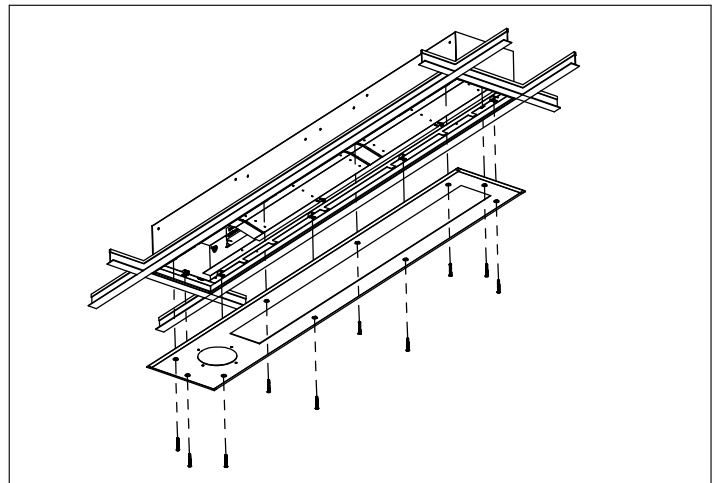


Figure 4

## CEILING MOUNT

1. Remove screws from Frame to open fixture. (Fig. 1)
2. Raise fixture into ceiling. (Fig. 2)
3. Remove Access Cover Panel and make all necessary electrical connections. (Fig. 3)
4. Re-attach Frame to Housing. (Fig. 4)

Installer is responsible for adequately reinforcing walls and/or ceiling to support luminaire weight. These instructions do not claim to cover all details or variations in the equipment, procedure or process. Specifications and dimensions are subject to change.