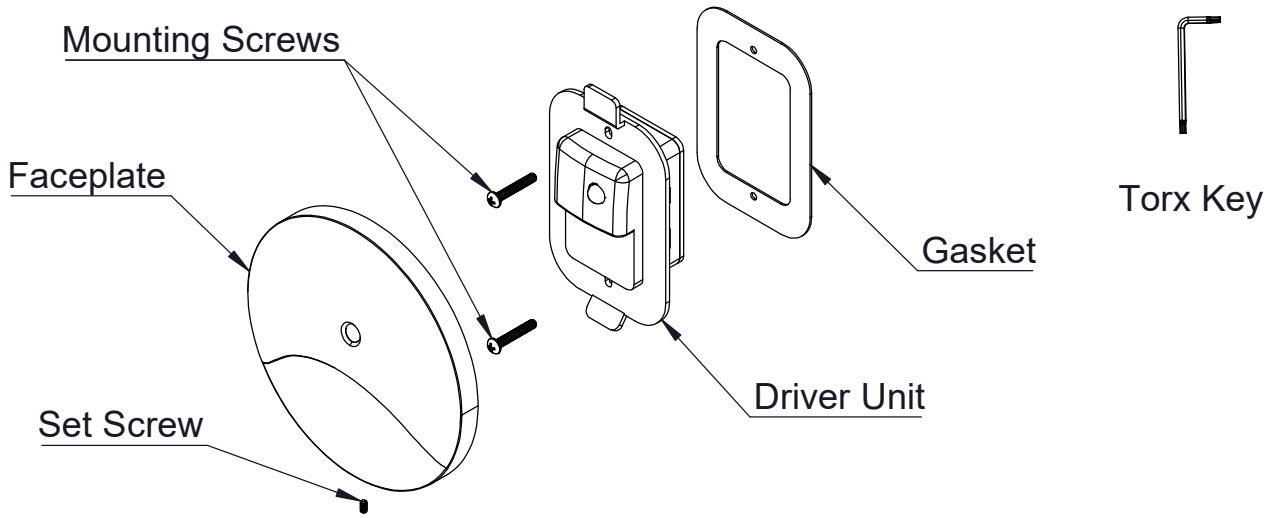
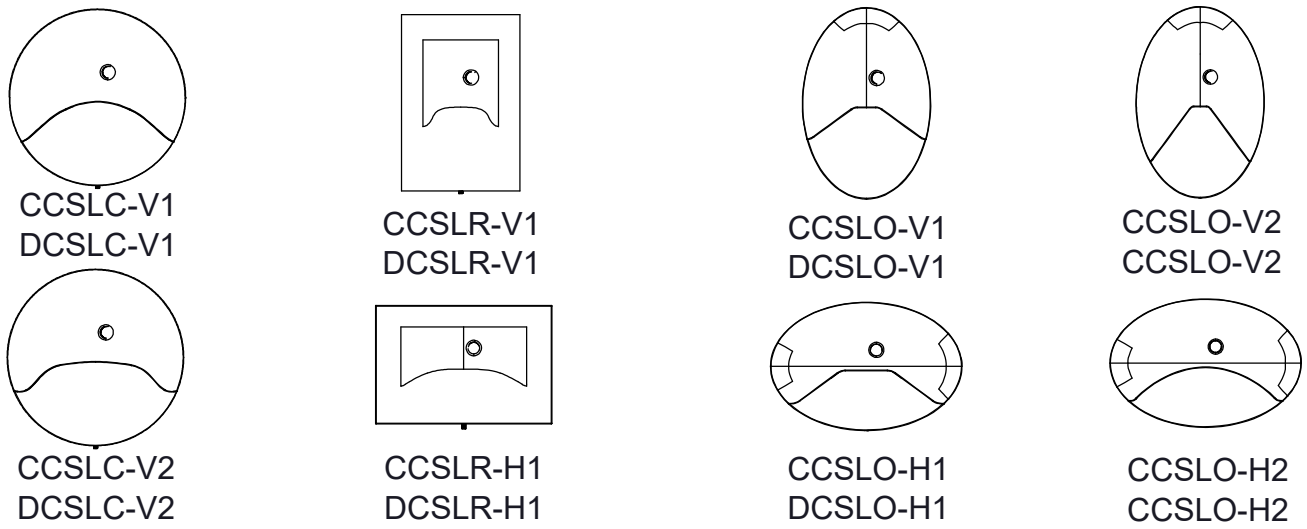


Fixture Family: CCSLx & DCSLx

Description: CCSLx & DCSLx Series - Installation Instructions

IMPORTANT SAFETY INSTRUCTIONS

- This product must be installed in accordance with all applicable installation codes by a person familiar with the construction and operation of the product and the hazards involved.
 - Disconnect power before beginning installation.
 - Fixture must be installed in compliance with the National Electric Code and any local codes.
 - To be installed only by a qualified electrician.
- Proper grounding is required to ensure personal safety.
 - Read all fixture markings and labels to ensure correct installation of fixture.
 - Risk of fire, use minimum of 90C supply connectors.
 - These instructions may not cover all details or variations. If additional information is needed, please contact New Star Lighting.



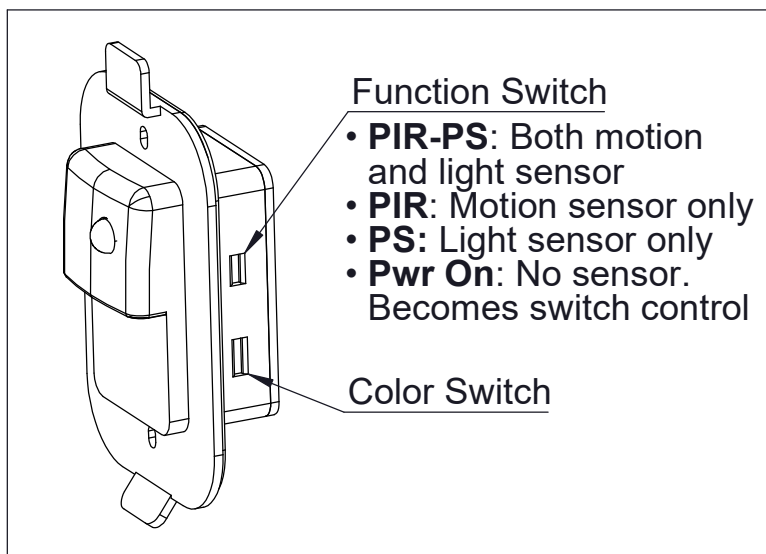


Figure 1

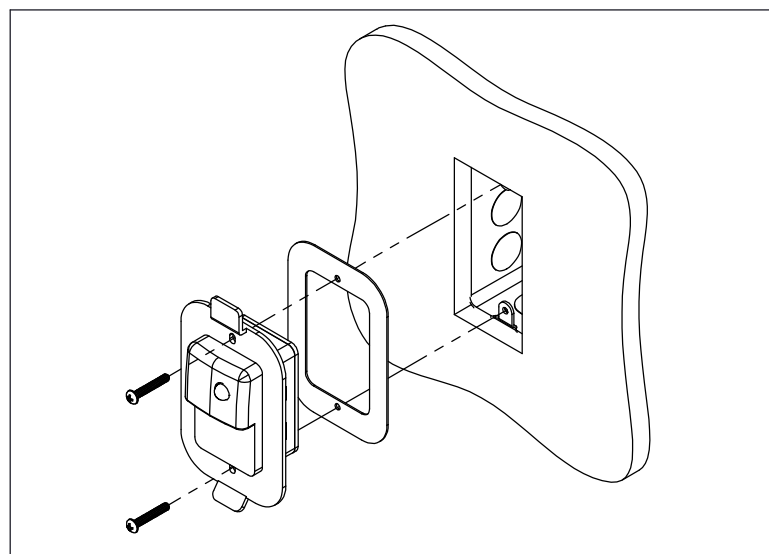


Figure 2

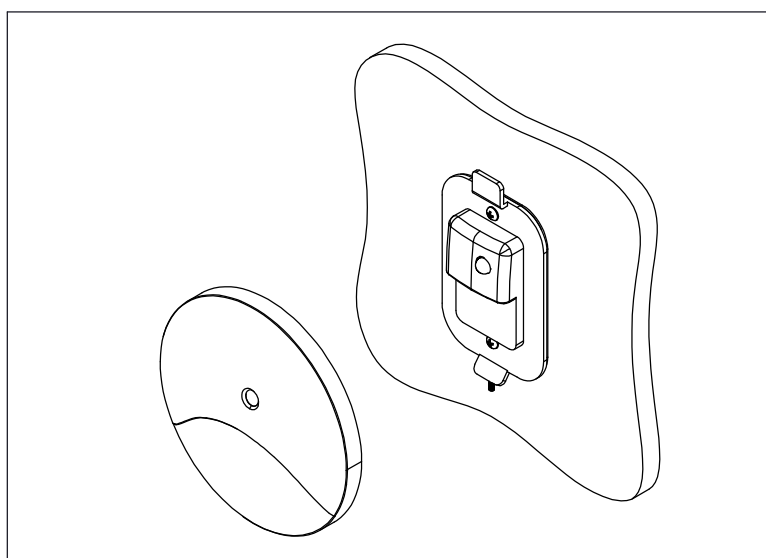


Figure 3

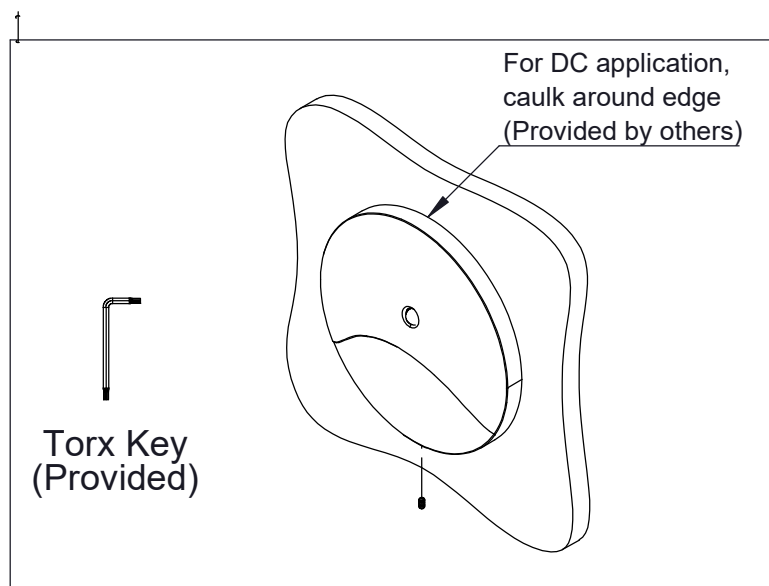


Figure 4

INSTALLATION STEPS

1. On Driver Unit, slide switches to desired color temperature and to desired function (Fig. 1)
2. Make all necessary electrical connections and mount Driver Unit with Gasket onto junction box using Mounting Screws (Fig. 2).
3. Attach Faceplate by aligning its groove to Driver Unit's catch tab (Fig. 3)
4. Secure Faceplate to Driver Unit with Set Screw using the provided Torx Key and for behaviour health application (DC), caulk all edges that meet the mounting wall (Fig. 4)

Installer is responsible for adequately reinforcing walls and/or ceiling to support luminaire weight. These instructions do not claim to cover all details or variations in the equipment, procedure, or process. Specifications and dimensions are subject to change.