

INSTALLATION INSTRUCTIONS

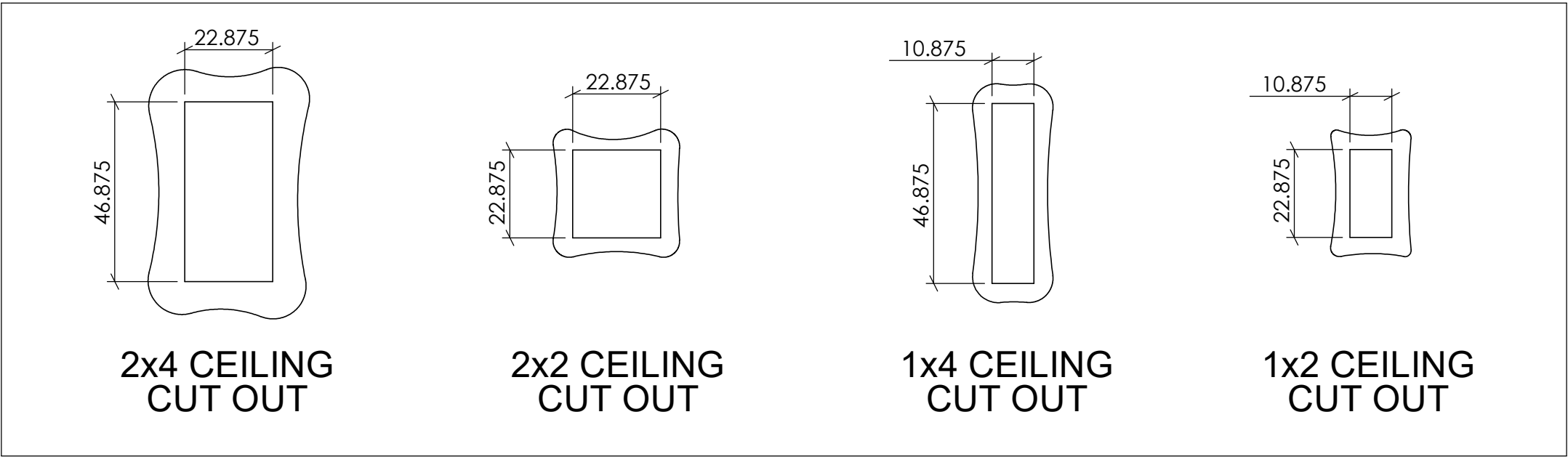


Fixture Family: AAT

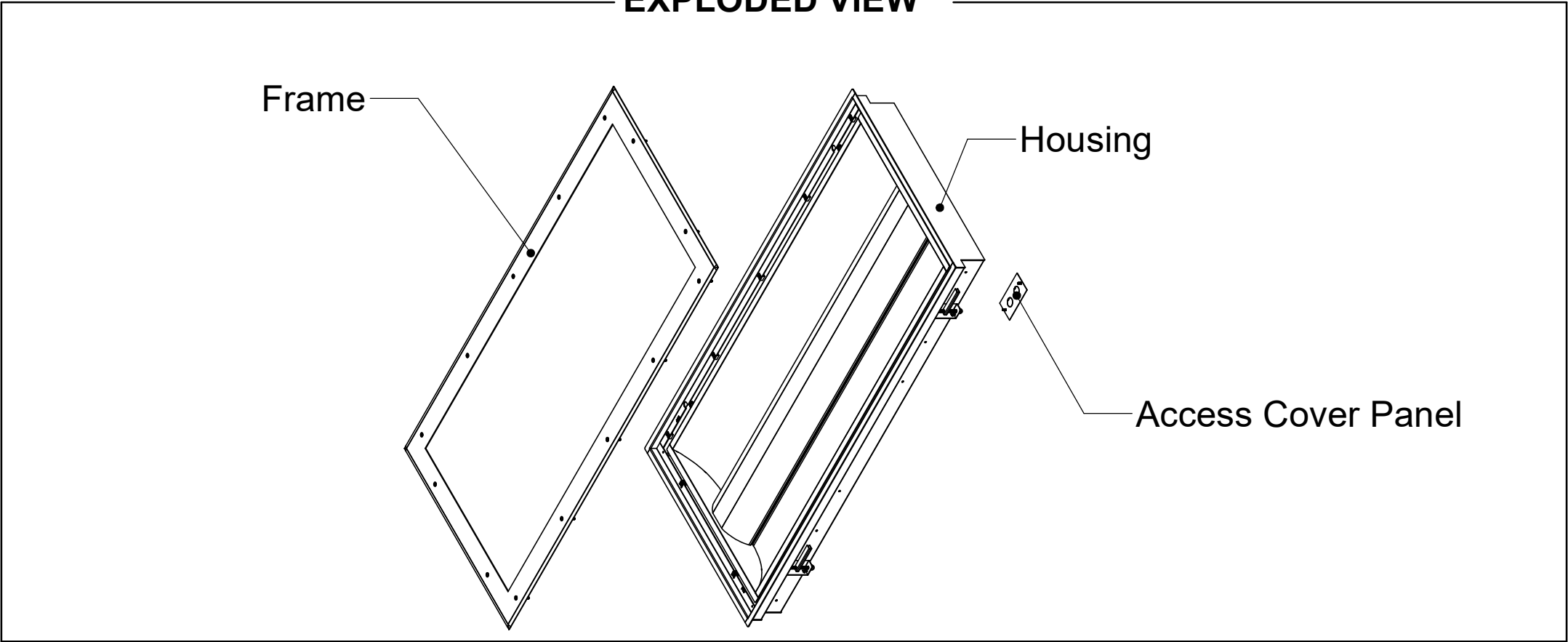
Description: Ceiling Mount Fixture

IMPORTANT SAFETY INSTRUCTIONS

- This product must be installed in accordance with the applicable installation code by a person familiar with the construction and operation of the product and the hazards involved.
- Disconnect power before beginning installation.
- Fixture must be installed in compliance with the National Electric Code and any local codes.
- To be installed only by a qualified electrician.
- Proper grounding is required to insure personal safety.
- Read all fixture markings and labels to ensure correct installation of fixture.
- Risk of fire, use minimum of 90C supply connectors.
- These instructions may not cover all details or the variations. If additional information is needed, please contact New Star Lighting.



EXPLODED VIEW



Installer is responsible for adequately reinforcing walls and/or ceiling to support luminaire weight. These instructions do not claim to cover all details or variations in the equipment, procedure or process. Specifications and dimensions are subject to change.

INSTALLATION INSTRUCTIONS

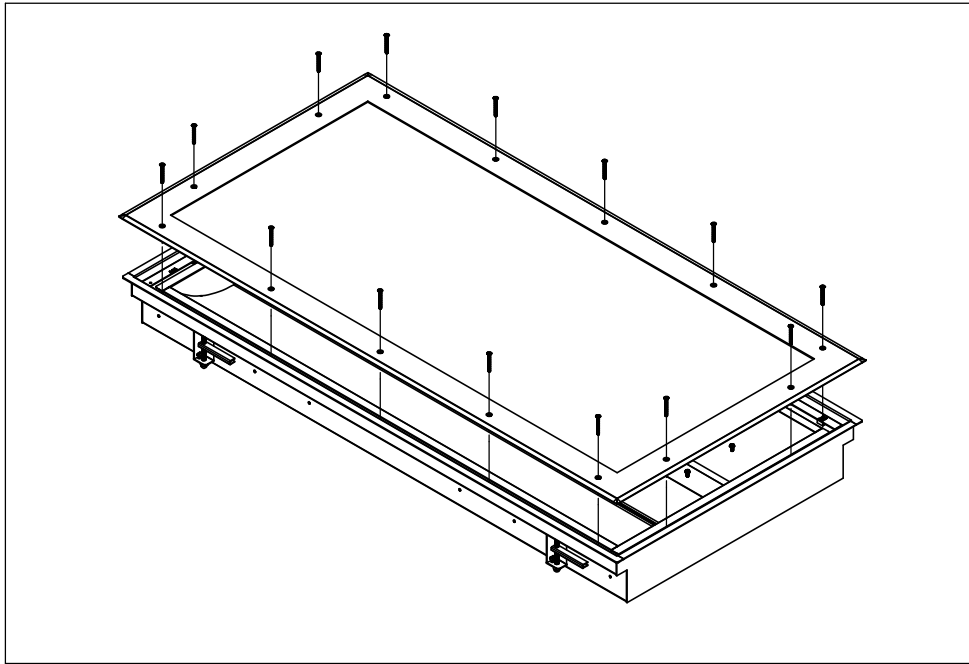


Figure 1

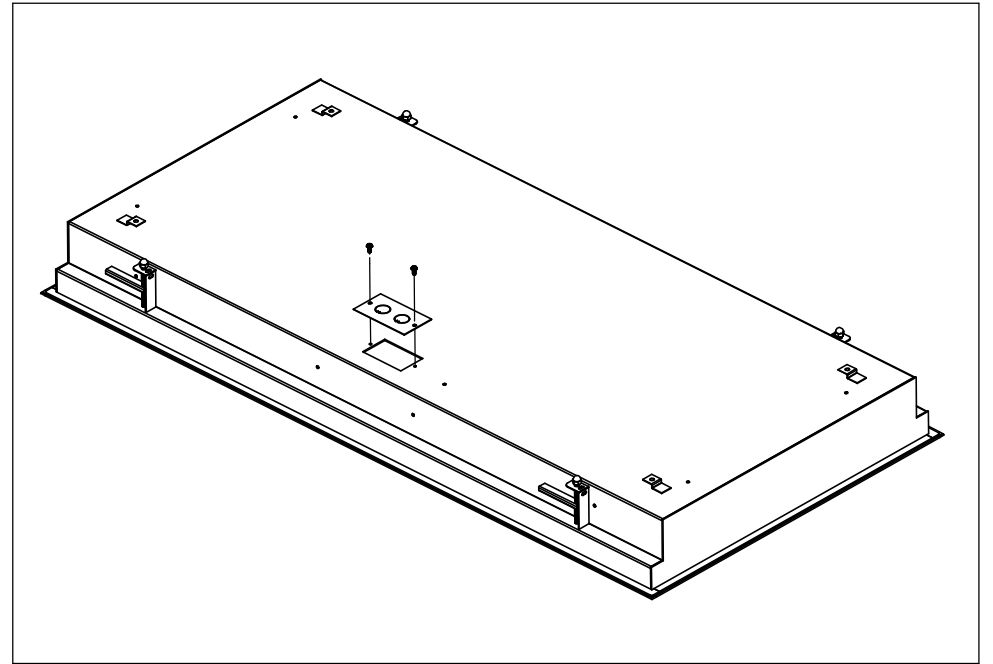


Figure 2

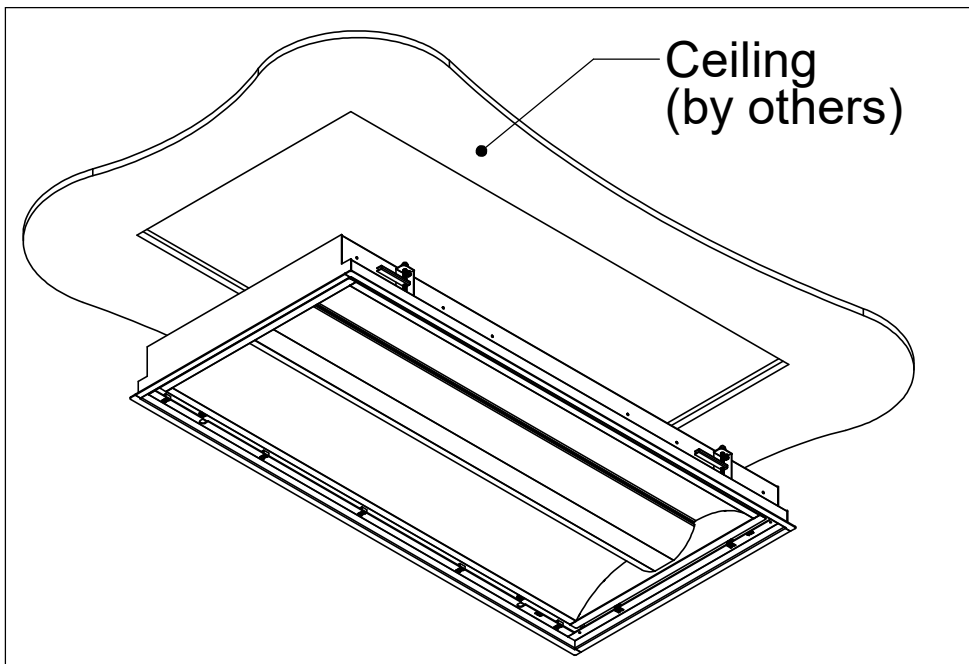


Figure 3

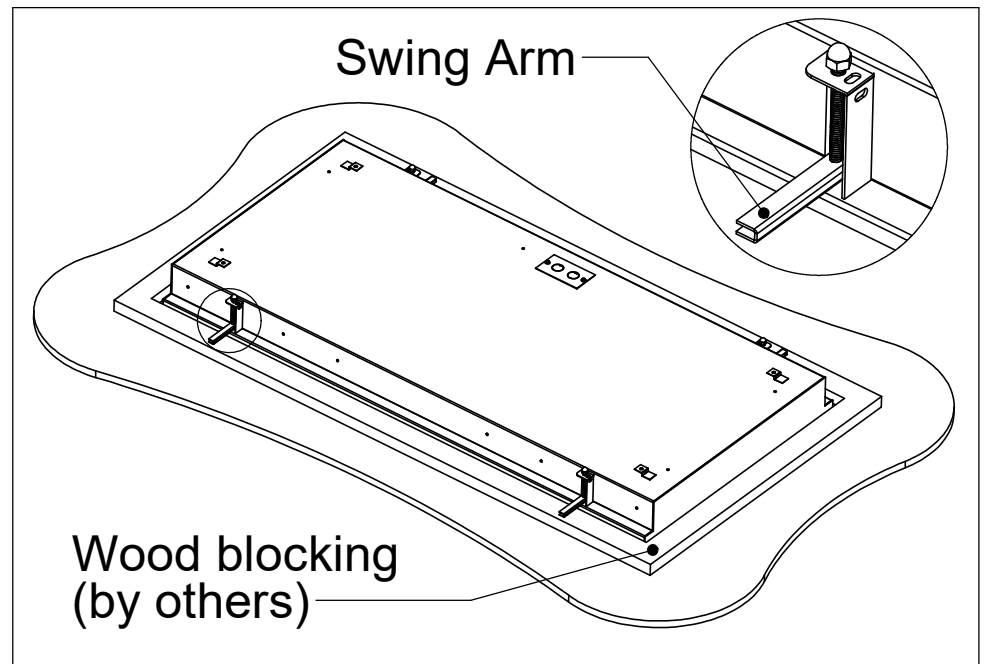


Figure 4

CEILING MOUNT

1. Remove fasteners and Frame (Fig. 1)
2. Remove Access Cover Panel, make all necessary electrical connections and re-attach Access Cover Panel (Fig. 2)
3. Raise Housing into ceiling (Fig. 3)
4. Rotate Swing Arms (Fig. 4)

Installer is responsible for adequately reinforcing walls and/or ceiling to support luminaire weight. These instructions do not claim to cover all details or variations in the equipment, procedure or process. Specifications and dimensions are subject to change.

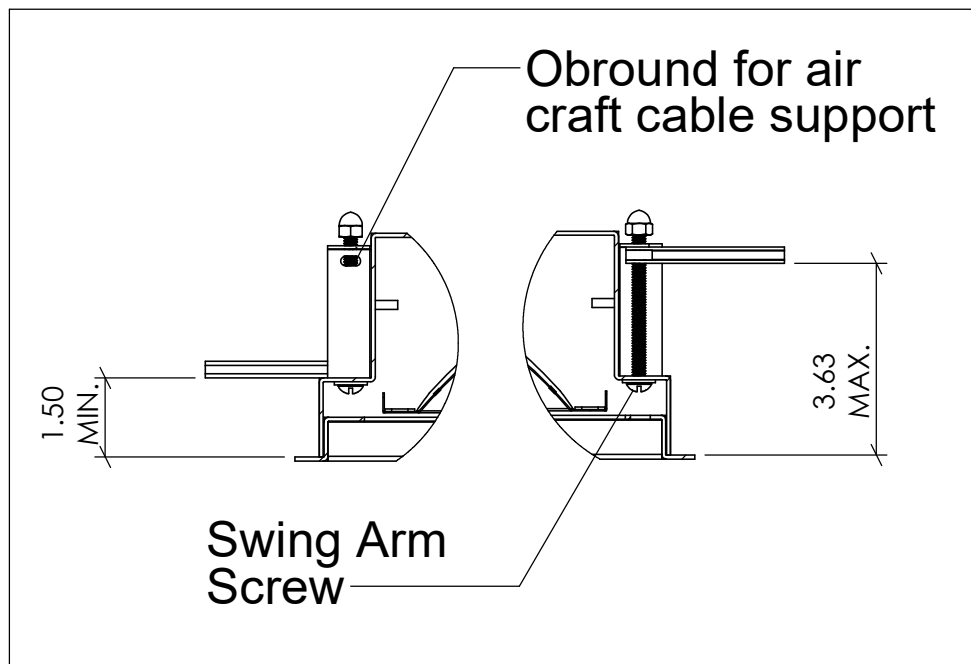


Figure 5

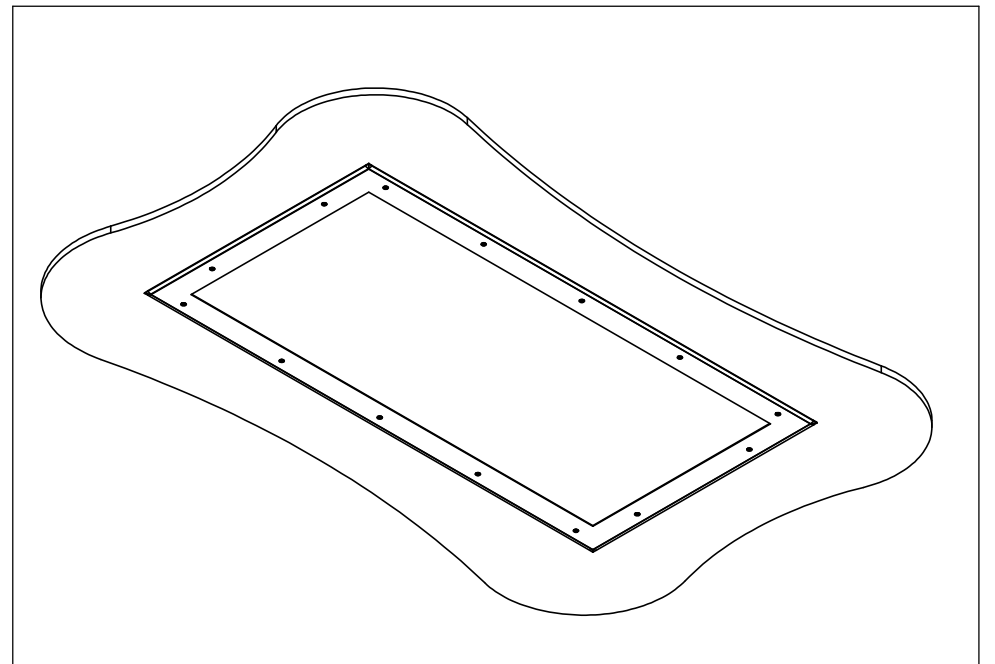


Figure 6

CEILING MOUNT

5. Rotate Swing Arm Screws to adjust the height of the Swing Arms as needed (Fig. 5)
6. Re-attach Frame (Fig. 6)