



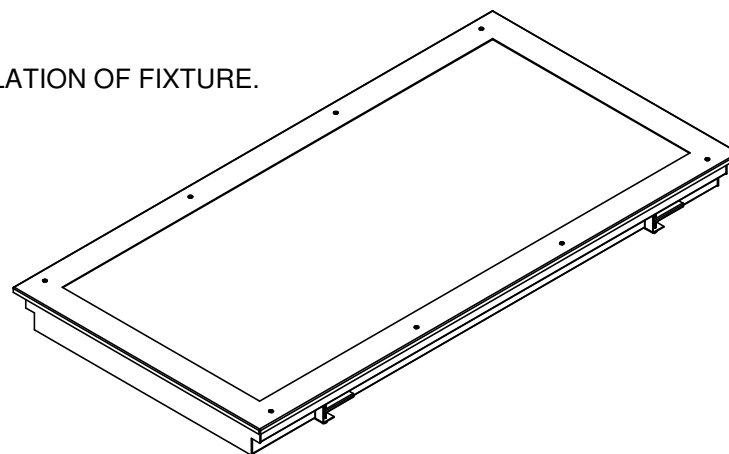
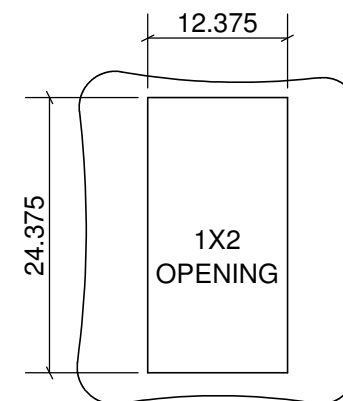
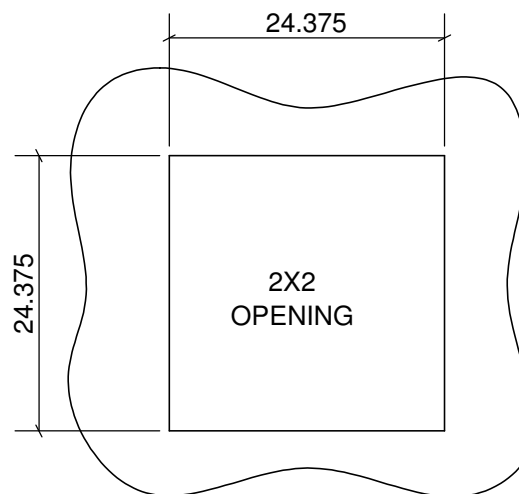
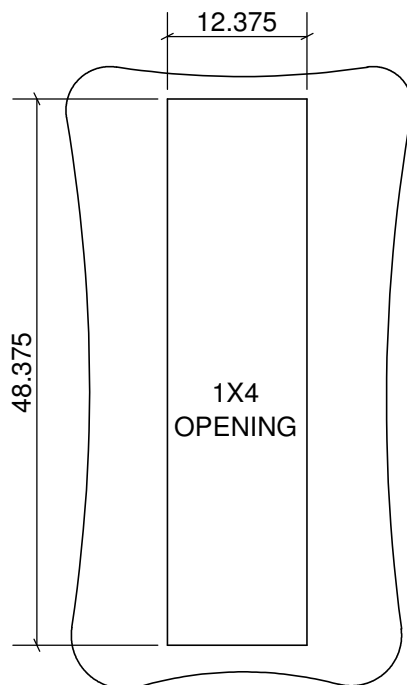
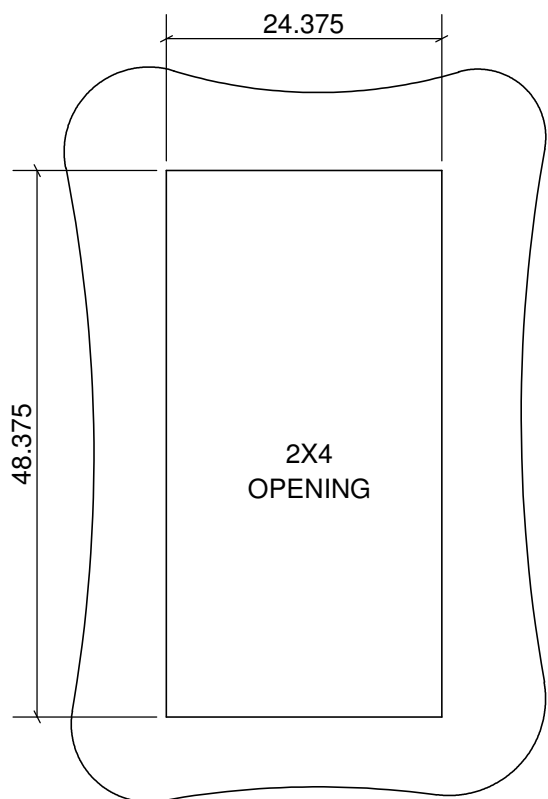
37M Series Installation Instructions

2225 W Pershing Rd. Chicago, IL 60609 - 773.847.1400 - www.newstarlighting.com

IMPORTANT SAFE GUARDS:

- THIS PRODUCT MUST BE INSTALLED IN ACCORDANCE WITH THE APPLICABLE INSTALLATION CODE BY A PERSON FAMILIAR WITH THE CONSTRUCTION AND OPERATION OF THE PRODUCT AND THE HAZARDS INVOLVED.
- DISCONNECT POWER BEFORE BEGINNING INSTALLATION.
- FIXTURE MUST BE INSTALLED IN COMPLIANCE WITH THE NATIONAL ELECTRIC CODE AND ANY LOCAL CODES.
- TO BE INSTALLED ONLY BY A QUALIFIED ELECTRICIAN.
- PROPER GROUNDING IS REQUIRED TO INSURE PERSONAL SAFETY.
- READ ALL FIXTURE MARKINGS AND LABELS TO ENSURE CORRECT INSTALLATION OF FIXTURE.
- RISK OF FIRE, USE A MINIMUM OF 90C SUPPLY CONNECTORS.

INSTALLATION INSTRUCTIONS:

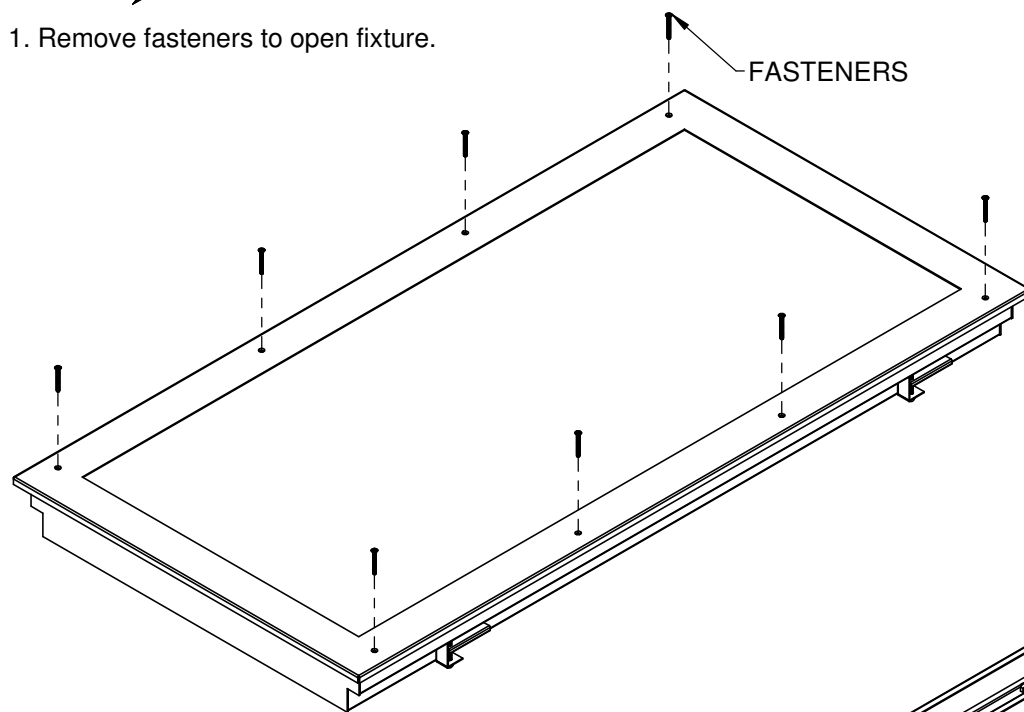




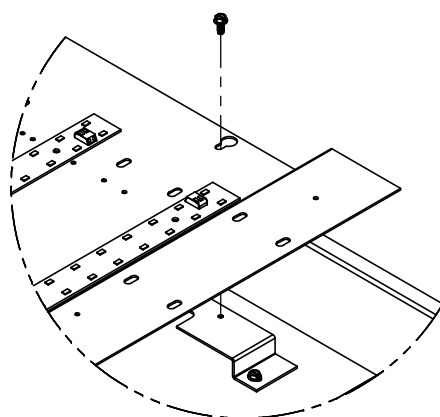
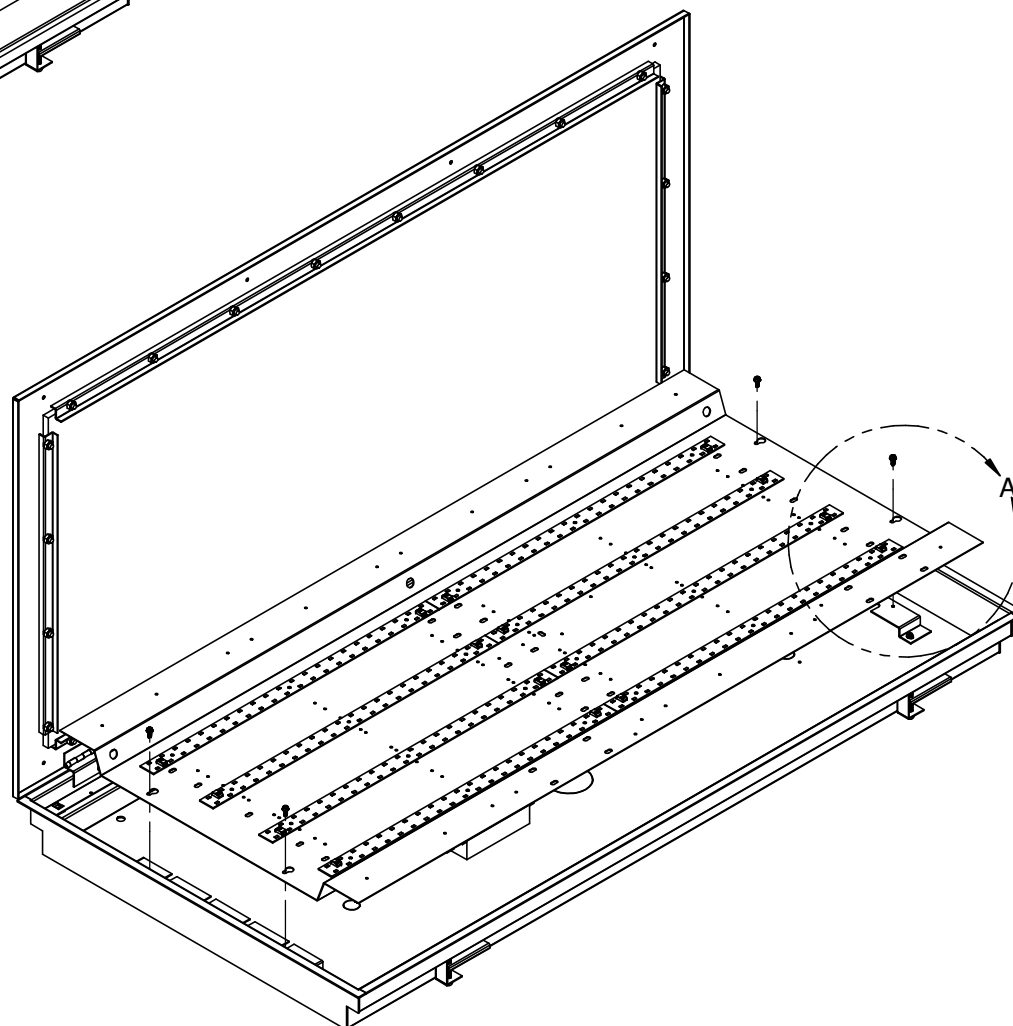
37M Series Installation Instructions

2225 W Pershing Rd. Chicago, IL 60609 - 773.847.1400 - www.newstarlighting.com

1. Remove fasteners to open fixture.



2. Remove LED gear tray.



DETAIL A
SCALE 1 : 5

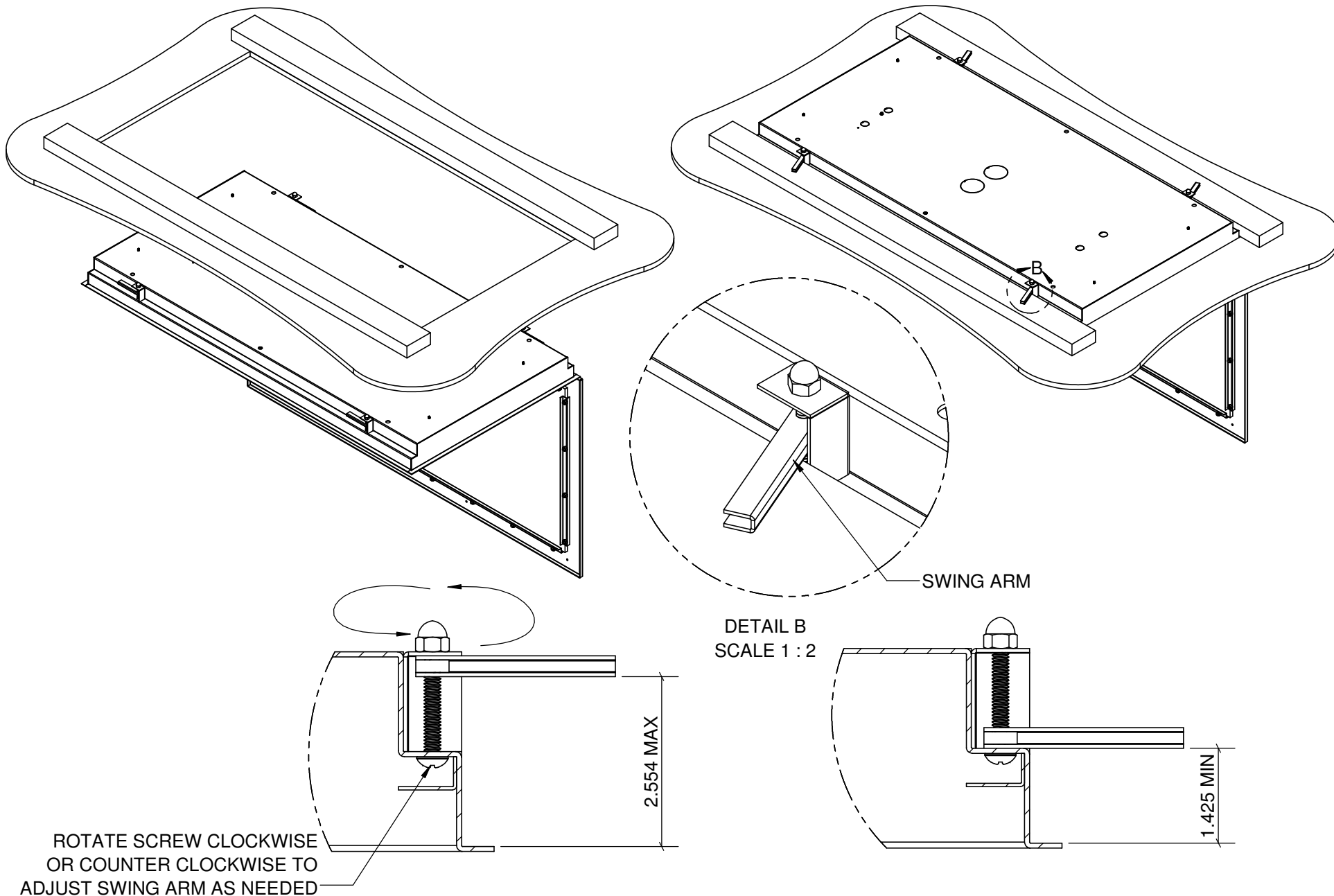


37M Series Installation Instructions

2225 W Pershing Rd. Chicago, IL 60609 - 773.847.1400 - www.newstarlighting.com

3. Raise fixture into ceiling.

4. Adjust swing arms accordingly.





37M Series Installation Instructions

2225 W Pershing Rd. Chicago, IL 60609 - 773.847.1400 - www.newstarlighting.com

5. After making necessary electrical connections, re-attach LED gear tray and close fixture.

